

NS2052-8P-2C

Switch Industrial sem Gestão - 8 Portos PoE Ethernet, 2 Portos Uplink Combinados RJ45/SFP

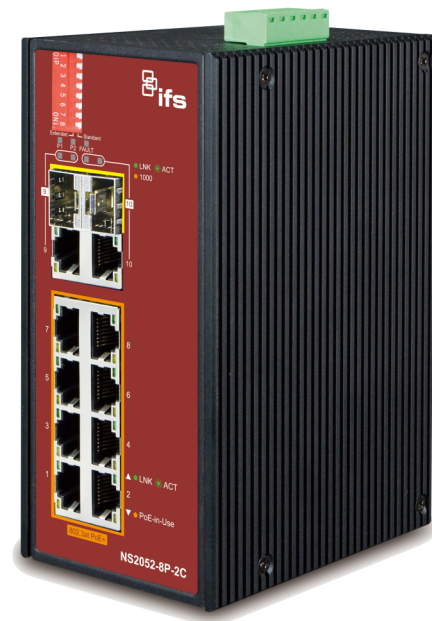
Overview

The IFS 8-port PoE Unmanaged Industrial Ethernet Switch provides four 10/100Mbps Ethernet ports with IEEE802.3-at PoE and one 10/100Mbps non-PoE Ethernet port.

This unmanaged switch provides plug-and-play installation with no programming required and is ideal for use in small IP systems. The switch uses an IP-30 standard metal case and can also be used in electrically harsh and climatically demanding environments. The switch accommodates either DIN-rail or wall mounting for efficient installation in multiple applications.

This switch is engineered with a high-performance switch architecture capable of providing a non-blocking switch fabric and wire-speed throughput of 5.6Gbps. With its 2K MAC address table, this switch offers wire-speed packet transfer performance without the risk of packet loss. The Flow Control function allows the switch to deliver fast and reliable IP data transfer.

This switch is ideal for applications such as IP cameras, access control, VoIP and wireless access points.



Detalhes

- 8 RJ-45 Ports 10/100Base-TX (PoE)
- 2 RJ-45/SFP combo Ports 100/1000 (non-PoE)
- Auto MDI/MDI-X
- High Performance Architecture
- Unmanaged plug and play installation requiring no programming
- Store-and-Forward switching architecture with wire-speed filtering and forwarding rates
- Power over Ethernet (PoE)
- Up to 4 IEEE 802.3at devices powered
- Supports up to 30 watts for each PoE port
- Auto detect powered device (PD)
- Robust Hardened Design
- Provides either DIN-rail or wall-mounting
- 52 to 56VDC Operation
- Redundant power with reverse-polarity protection
- Removable terminal block for master and slave power
- Alarm relay output for power-failure alert
- Voltage/surge-suppression
- Complies with IEC60068-2-xx standards for free-fall, shock and vibration
- Wide operating temperature range of -40°C to 75°C

NS2052-8P-2C

Switch Industrial sem Gestão - 8 Portos PoE Ethernet, 2 Portos Uplink Combinados RJ45/SFP

Especificações técnicas

Categoria

Categoria	Industrial
Gestão	Não gerido
PoE	Sim

Portos físicos

Nr. de portos	8
Tipo de porto	Rápido
Velocidade	Rápido
PoE / PoE+	8 port PoE+
Porta de fibra	2 SFP
SFPs Suportados	Séries S30/S35

Desempenho do switch

Material do switch	5.6Gbps
Throughput (Mpps)	4.1
Suporte Jumbo frame	10 K

Funções da camada 2

Interface de gestão	Unmanaged plug and play installation requires no programming
---------------------	--

Elétrica

Potência Total PoE Disponível	30 W (per port)
Fonte redundante	Sim
Tipo de fonte de alimentação	52 a 56 VDC
Consumo de energia	244 W (Max.)

Físico

Dimensões físicas	72 x 107 x 161 mm
Peso líquido	1034 g
Cor	Preto
Material	Metal
Tipo de montagem	Calha DIN, Montagem em parede

Ambiental

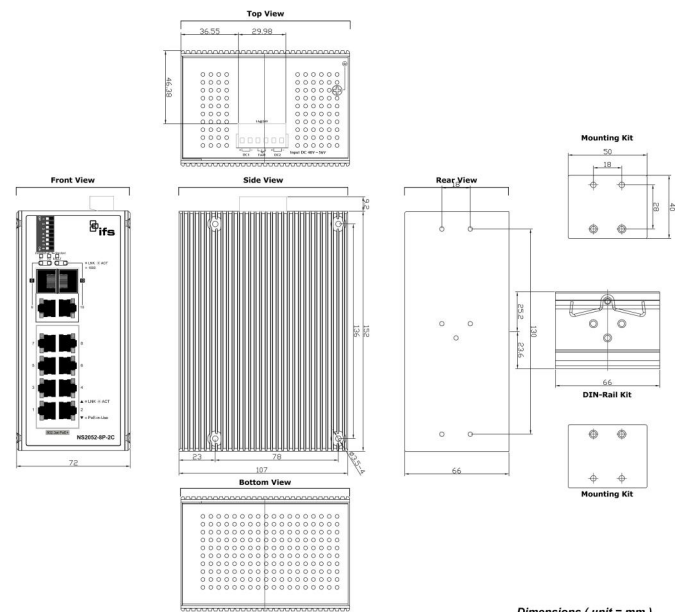
Temperatura de operação	-40 to +75
Temperatura de armazenamento	-40 to 75 °C
Humidade relativa	0 to 95% (non-condensing)
Ambiente	Interior
Classificação IP	IP30

Regulamentação

IEC standard	IEC60068-2-27 (shock), IEC60068-2-32 (free fall), IEC60068-2-6 (vibration)
--------------	--

LED Indicators

Power:	Power input 1 - Green; Power input 2 - Green
Power Fault:	Green: Normal operation - Off; Fault - Red
PoE Ports (Port-1~Port-8):	Green: LNK/ACT (10/100Mbps), Orange: PoE-In-Use
Uplink Port (Port-9~Port-10) SFP:	Green: LNK/ACT, Orange: 1000
Uplink Port (Port-9~Port-10) RJ45:	Green: LNK/ACT, Orange: 1000



Dimensions (unit = mm)



Como empresa de inovação, a Carrier Fire & Security reserva o direito de alterar as especificações do produto sem aviso prévio. Para obter informações sobre as especificações mais recentes do produto, visite pt.firesecurityproducts.com online ou contate o departamento comercial.

Last updated on 5 May 2023 - 10:27