

# NS4702-24P-4X

## Enterprise-class 24-port PoE+ Gigabit Switch with 10G uplink and touchscreen

### Overview

This enterprise-class network switch is engineered to meet a variety of high-performance applications such as PoE distribution, optical network architectures, and high-density performance through reliable technology and advance Layer 2+ networking features.

It is ideally suited to large scale IP CCTV based security systems.

### Touch Screen Interface

The touchscreen interface allows for basic configuration and diagnostics without the need for a local computer. Basics set-up such as IP configuration, port assignment and PoE control can all be configured from the touchscreen interface.

### Touch Screen Interface

The touchscreen also supports basic diagnostics such as monitoring of ports, PoE power as well as diagnostic functions such as local ICMP Ping and PD Alive Check management.

### Powerful PoE+ Support

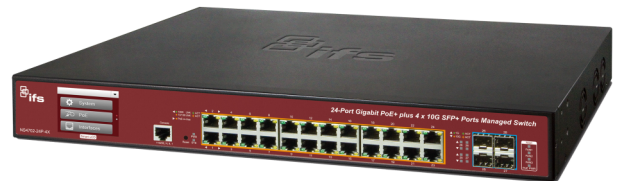
The NS4702-24P-4X features IEEE 802.3at Power over Ethernet (PoE+) and up to 400 Watts of PoE budget providing optimized deployment and power management of PoE edge devices such as IP Surveillance cameras, access control panels and wireless access points.

### Static Routing

The NS4702-24P-4X supports static routing tables allowing for complex system architectures. Traffic can be routed across different domains or between different VPN. This allows flexible network design and greater control of network traffic, essential for modern IP CCTV systems.

### Flexible 10Gbps Ethernet Trunking Solution

10G Ethernet is a big leap in the evolution of Ethernet. Each of the SFP+ slot in the NS4702-24P-4X supports Dual-Speed, 10GBase-SR/LR or 1000Base-SX/LX. The administrator now can flexibly choose the suitable SFP/SFP+ transceiver according to the transmission distance or the transmission speed required to extend the network efficiently.



### Dettagli

- Built in Touch Screen for configuration and monitoring
- 24-ports Gigabit Ethernet RJ-45 with PoE+
- 4 SFP/SFP+ slots for 10G Uplinks - compatible with S3x and S4x Series SFPs
- PD Alive Checking
- Support for Static Routing
- Up to 128Gbps non-blocking switch fabric
- 32 Megabits shared data buffer
- 16K MAC address table
- Full Multicast Support for IP Video - up to 255 multicast groups
- VLAN Support - up to 256 VLANs groups
- Power over Ethernet
- Complies with IEEE 802.3at Standard for PoE
- Up to 400 Watts PoE Power Budget
- Up to 13 PoE+ devices simultaneously
- Advanced Security
- MAC Filtering and Source IP/MAC address port-binding
- Quality of Service (QoS)

# NS4702-24P-4X

## Enterprise-class 24-port PoE+ Gigabit Switch with 10G uplink and touchscreen

### Specifiche tecniche

#### Generale

Controllo della tempesta	Broadcast, Multicast, Unicast
Sicurezza	802.1x, ACL, RADIUS, Source MAC / IP address binding, TACACS+
Snooping DHCP	Si
Uscita guasto relè	No

#### Categoria

Categoria	Entreprice
Gestione	Gestito (routing statico L3)
Gestito	Sì (Layer 3)
PoE	Si

#### Porte fisiche

No. di porte	24
Tipo porta	Gig
Velocità	10G
Porta fibra	4
Supporto SFPs	S30/S35 series, S40 series

#### Cambia prestazioni

Tavolo Mac	16 K
Supporto Jumbo frame	10 K

#### Funzioni di livello 2

Snooping IGMP	255 Group, Snooping v1, v2, v3
Query IGMP	Si
VLAN, QoS	255, yes

#### Elettrico

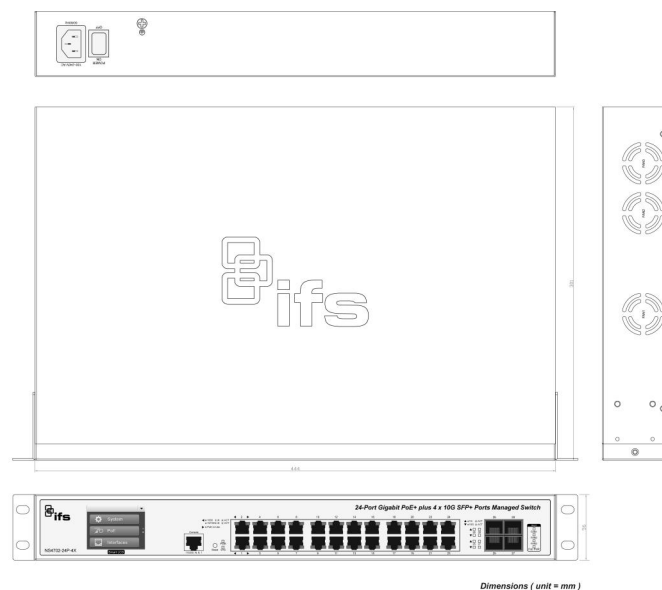
Alimentazione ridondante	No
Tipo di alimentatore	100 a 240 VCA

#### Fisico

Colore	Nero
Tipo di montaggio	Rack 19"
Impilabile	No

#### Ambientale

Ambiente	Interno
----------	---------



Dimensions ( unit = mm )



In quanto azienda in continua innovazione, Carrier Fire & Security si riserva il diritto di modificare le specifiche del prodotto senza preavviso. Per avere informazioni sempre aggiornate, visita [it.firesecurityproducts.com](http://it.firesecurityproducts.com) online o contatta il tuo riferimento commerciale.

Last updated on 5 May 2023 - 10:26