

NS2052-8P-2C

8 Port Unmanaged POEat Industrial Switch with 2 SFP ports

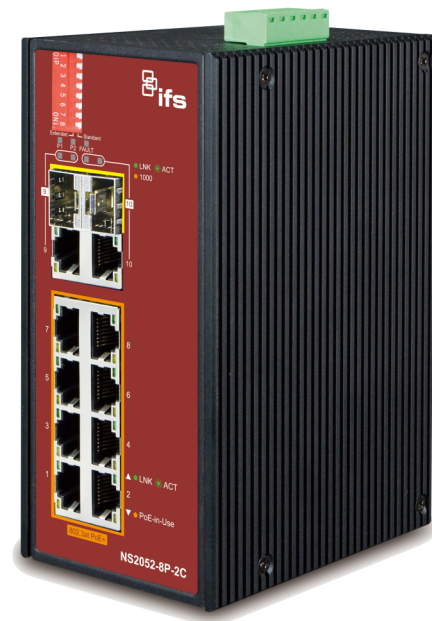
Overview

The IFS 8-port PoE Unmanaged Industrial Ethernet Switch provides four 10/100Mbps Ethernet ports with IEEE802.3-at PoE and one 10/100Mbps non-PoE Ethernet port.

This unmanaged switch provides plug-and-play installation with no programming required and is ideal for use in small IP systems. The switch uses an IP-30 standard metal case and can also be used in electrically harsh and climatically demanding environments. The switch accommodates either DIN-rail or wall mounting for efficient installation in multiple applications.

This switch is engineered with a high-performance switch architecture capable of providing a non-blocking switch fabric and wire-speed throughput of 5.6Gbps. With its 2K MAC address table, this switch offers wire-speed packet transfer performance without the risk of packet loss. The Flow Control function allows the switch to deliver fast and reliable IP data transfer.

This switch is ideal for applications such as IP cameras, access control, VoIP and wireless access points.



Dettagli

- 8 RJ-45 Ports 10/100Base-TX (PoE)
- 2 RJ-45/SFP combo Ports 100/1000 (non-PoE)
- Auto MDI/MDI-X
- High Performance Architecture
- Unmanaged plug and play installation requiring no programming
- Store-and-Forward switching architecture with wire-speed filtering and forwarding rates
- Power over Ethernet (PoE)
- Up to 4 IEEE 802.3at devices powered
- Supports up to 30 watts for each PoE port
- Auto detect powered device (PD)
- Robust Hardened Design
- Provides either DIN-rail or wall-mounting
- 52 to 56VDC Operation
- Redundant power with reverse-polarity protection
- Removable terminal block for master and slave power
- Alarm relay output for power-failure alert
- Voltage/surge-suppression
- Complies with IEC60068-2-xx standards for free-fall, shock and vibration
- Wide operating temperature range of -40°C to 75°C

NS2052-8P-2C

8 Port Unmanaged POEat Industrial Switch with 2 SFP ports

Specifiche tecniche

Categoria

Categoria	Industriale
Gestione	Non gestiti
PoE	Si

Porte fisiche

No. di porte	8
Tipo porta	Veloce
Velocità	Veloce
PoE / PoE+	8 port PoE+
Porta fibra	2 SFP
Supporto SFPs	S30/S35 series

Cambia prestazioni

Cambia tessuto	5.6Gbps
Velocità effettiva (Mpps)	4.1
Supporto Jumbo frame	10 K

Funzioni di livello 2

Interfaccia di gestione	Unmanaged plug and play installation requires no programming
-------------------------	--

Elettrico

Budget energetico PoE	30 W (per port)
Alimentazione ridondante	Si
Tipo di alimentatore	52 a 56 VDC
Consumo di energia	244 W (Max.)

Fisico

Dimensioni fisiche	72 x 107 x 161 mm
Peso netto	1034 g
Colore	Nero
Materiale	Metallo
Tipo di montaggio	barra DIN, Montaggio a parete

Ambientale

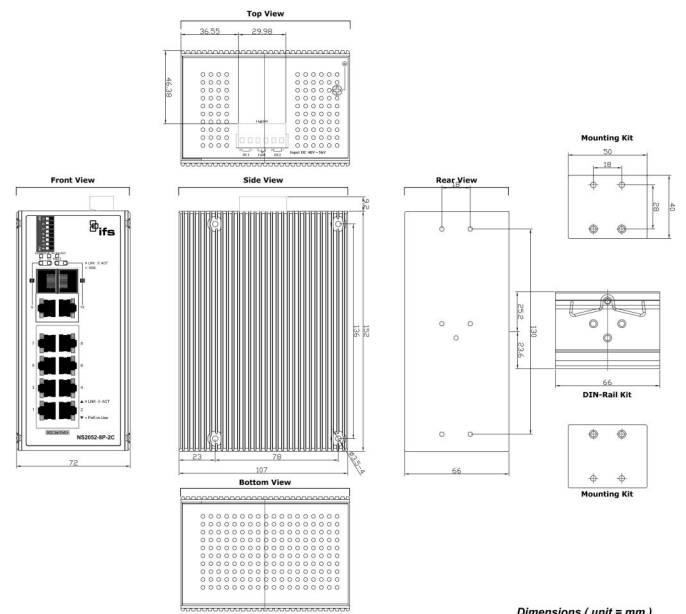
Temperatura operativa	-40 to +75
Temperatura di immagazzinamento	-40 to 75 °C
Umidità relativa	0 to 95% (non-condensing)
Ambiente	Interno
IP rating	IP30

Regolatorio

Standard IEC	IEC60068-2-27 (shock), IEC60068-2-32 (free fall), IEC60068-2-6 (vibration)
--------------	--

LED Indicators

Power:	Power input 1 - Green; Power input 2 - Green
Power Fault:	Green: Normal operation - Off; Fault - Red
PoE Ports (Port-1~Port-8):	Green: LNK/ACT (10/100Mbps), Orange: PoE-In-Use
Uplink Port (Port-9~Port-10) SFP:	Green: LNK/ACT, Orange: 1000
Uplink Port (Port-9~Port-10) RJ45:	Green: LNK/ACT, Orange: 1000



In quanto azienda in continua innovazione, Carrier Fire & Security si riserva il diritto di modificare le specifiche del prodotto senza preavviso. Per avere informazioni sempre aggiornate, visita it.firesecurityproducts.com online o contatta il tuo riferimento commerciale.

Last updated on 5 May 2023 - 10:27