

PCG-GRAPHIC102U

Graphic Software for KSA700/FP1500 Fire Systems (1 panel-2 loops) USB

General

The PCG-Config Series fire graphics application consists of 3 software applications that allow the software to grow with the installation. The smallest version, PCG-Graphic102, work with a single panel only and allows for the configuration of all devices up to a maximum of 2 loops. PCG-Graphic105 supports a single panel only, but then up to 5 loops. PCG-GraphicNW allows for monitoring on networked systems with multiple panels. Upgrades from one version to the other do not require rework on the existing configurations, drawings, etc.

Features for the user

PCG-Graphic provides the user with a graphical front end to visualize all alarms occurring in the system and to take action on these alarms. It also allows visualizing the real time information for each sensor in alarm together with its address, type and condition. All events are logged and acknowledged on the PC.

User functions are accessible from easy-to-use, drop down menus as well as toolbar buttons, each with short and descriptive help text, giving the operator information as the function is selected.

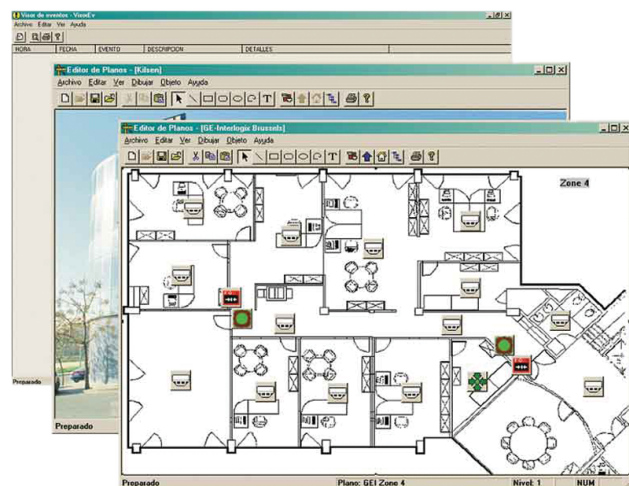
Features for the Installer

Any number of plans are available for each panel. They are linked by easy-to-use, navigation buttons.

The software's icon library includes a wide selection of icons, but also accommodates the ability to add or change icons. Icons are placed on the floor plans by simple drag-and-drop functionality. To save precious programming time and avoid mistakes, icon text information is supplied directly from the panels.

Protection

The program is protected by means of a protection key (dongle). PCG-Graphic102U and PCG-GraphicNWU is supplied with a USB-type dongle, whilst other versions are supplied with a parallel port dongle.



Details

- Bi-directional communication with single panels and networked fire systems
- Local or remote connection via modem or TCP/IP
- Large selection of user configurable icons
- Visualises device alarms and status of in- and outputs
- Event texts retrieval from the panel
- Configurator and operator control levels
- Navigation buttons allowed
- Event logs with reporting facilities
- Basic drawing package included
- Imports bmp & drw format graphics
- USB or Parallel hardware key

PCG-GRAPHIC102U

Graphic Software for KSA700/FP1500 Fire Systems (1 panel-2 loops) USB

Technical specifications

Hardware requirements

Communication	RS232, modem and/or TCP/IP
Display	SVGA or higher resolution
Hard disk	2 Gb with 650 Mb free space
Keyboard	Required
Pointing device	Required
Printer	System printer required for printing
Processor	1 GHz or higher Pentium III-compatible CPU
RAM	256 Mb or more
Removable media	1.44 Mb floppy and CD-ROM or DVD drive

Software requirements

Operating system	Windows '98 or Windows 2000
------------------	-----------------------------