



LNL-X3300

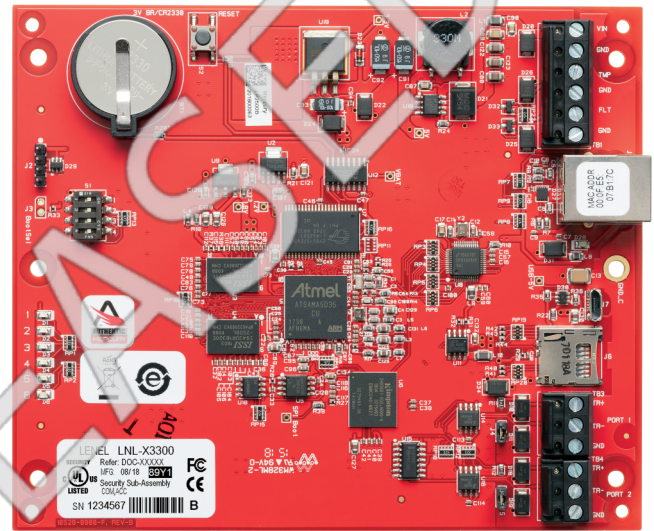
Intelligent system controller

Overview

The LNL-X3300 Intelligent System Controller (ISC) is designed for advanced access control applications. As the access control engine for the OnGuard® system, the ISC provides power and functionality. The ISC can communicate to the host computer in a single- or dual-path Ethernet configuration. Multiple combinations of Input Control Modules, Output Control Modules and Card Reader Interface Modules (up to 64 devices) can be configured.

Utilizing its native Ethernet communications and an advanced 32-bit processor, the LNL-X3300 can communicate upstream to the host computer through its primary Ethernet port, with throughput up to 8 times greater than the fastest serial connections. Additionally, the LNL-X3300 offers an optional secondary communications option, through a USB to Ethernet connection.

The LNL-X3300 can store up to 500,000 cardholders in nonvolatile flash memory, and supports selective download for larger cardholder databases. The two downstream RS-485 2-wire ports can be used to connect up to 64 devices (64 doors) in many combinations of LNL-1100, LNL-1200, LNL-1300, and LNL-1320 as well as to older devices like the LNL-500B and LNL-500W modules.



Details

- DHCP and fixed IP addressing supported
- DNS device naming through DHCP extended commands
- Optional Secondary NIC, USB port (2.0) with optional adapter
- 15 MB of available on-board, non-volatile flash memory
- Battery-back, non-volatile storage of 50,000 events
- Configurable option for Data at Rest encryption
- Firmware stored in flash memory, background download of firmware updates supported
- 12 or 24 VDC input power
- Supports up to 16 badge formats
- Biometric template storage support
- Up to 32,000 access level permissions
- 255 holidays with grouping
- 255 timezones, each with 6 intervals
- Elevator control support for up to 128 floors
- Supports up to 9-digit user PIN codes
- Status LEDs for heartbeat & battery status, upstream and downstream communication, and memory write status
- Two dedicated inputs for tamper and power failure status
- Advanced Encryption Standard (AES) 256-bit algorithm for communication to Lenel Series 3 reader and I/O modules; AES
- 128 bit encryption with Lenel Series 2 reader and I/O modules
- AES128 or TLS 1.2 (with AES256 support) communication to OnGuard
- RNDIS Support to allow USB connection to display controller web configuration pages

LNL-X3300

Intelligent system controller

Technical specifications

System

Controller type	Main controller
Software compatibility	OnGuard
Controller accessory	LNL-200XA, LNL-400XA, LNL-600XA
Max. no. of access levels	128
Max. no. of timezones	255
Max. no. of card formats	16
Max. no. of PIN code digits	9
Max. no. of holidays	255
Elevator control	Yes
Elevator control max no. of floors	128
Max. no. of memory	15 MB
PCB only	Yes

Users / cards

Max no. of cardholders	500000
------------------------	--------

Interfaces

Host connection	IP
-----------------	----

Communication

Bus interface	RS485
IP addressing	DHCP, Fixed IP
IP port speed	10 Mbit, 100 Mbit

Electrical

Operating voltage	12 or 24 VDC
Current consumption	250 mA

Physical

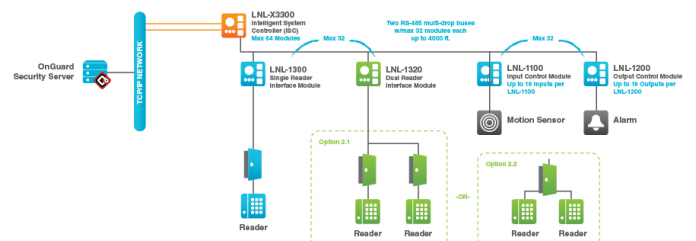
Physical dimensions	127 x 152 x 25 mm
Net weight	115 g

Environmental

Operating temperature	0 to +70°C
Storage temperature	-55 to +85°C
Relative humidity	0 to 95% noncondensing
Environment	Indoor

Regulatory

Compliance	CE, FCC, RoHS, UL 1076, UL 294
Certification	CE, UL



As a company of innovation, Kidde Global Solutions reserves the right to change product specifications without notice. For the latest product specifications, visit firesecurityproducts.com online or contact your sales representative.

Last updated on 29 March 2024 - 11:43