

LNL-X2220

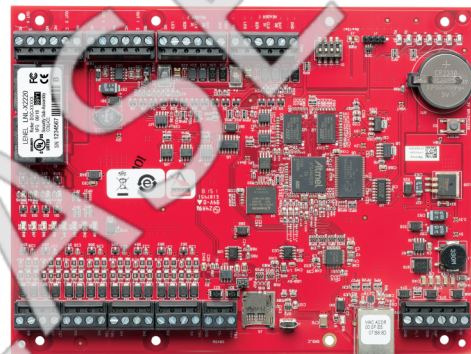
Intelligent dual reader controller

Overview

The LNL-X2220 Intelligent Dual Reader Controller (IDRC) provides a single board solution for interfacing one or two doors to an OnGuard® system. In addition, other I/O and reader interface modules can be added on the controller's downstream port to expand its capabilities. The LNL-X2220 controller revolutionizes access control system architecture by allowing Ethernet connection directly from an entry location to the OnGuard server, while still providing the security, functionality, and modularity of Lenel's proven hardware platform. The LNL-X2220 controller is scalable for any access control application, from the most basic to the most sophisticated. In the event of communication loss, the LNL-X2220 controller allows nearly all local functionality to continue unimpaired until the server connection is restored.

Utilizing its native Ethernet communications and an advanced 32-bit processor, the LNL-X2220 controller can communicate upstream to the host computer through its Ethernet port. The controller can store up to 250,000 cardholders in non-volatile flash memory, and supports selective download for larger cardholder databases. The downstream RS-485 two-wire port can be used to connect up to 32 devices (maximum 64 doors).

Two on-board reader ports support Data1/Data0, Clock/Data, Supervised and Unsupervised F2F, Biometric readers and the bi-directional RS-485 Open Supervised Device Protocol (OSDP) communications. Each LNL-X2220 controller supports up to sixteen different card formats. The LNL-X2220 controller includes eight inputs that support normally open, normally closed, supervised, and unsupervised circuits. In addition, four output relays support fail-safe or fail-secure operation.



Details

- DNS device naming through DHCP extended commands
- 6 MB of available on-board, non-volatile flash memory
- Battery-backed, non-volatile storage of 50,000 events
- Configurable option for Data at Rest encryption
- Firmware stored in flash memory, background download of firmware updates supported
- Supports up to sixteen badge formats
- Biometric template storage support for OSDP™ Biometric and legacy Bioscrypt® readers
- Optional Secondary NIC, USB port (2.0) with optional adapter
- Enhanced anti-passback capabilities
- Up to 32,000 access level permissions
- Elevator control support for up to 128 floors
- Individual extended held open and strike times
- Two dedicated inputs for tamper and power failure status
- Advanced Encryption Standard (AES) 256-bit algorithm for communications to Lenel Series 3 reader and I/O modules; AES128 bit encryption to Lenel Series 2 reader and I/O modules
- AES128 or TLS 1.2 (with AES256 support) communication to OnGuard
- RNDIS support enables USB connection to display controller web configuration pages
- Supports Data 1/Data0, Clock/Data, Supervised and Unsupervised F2F and OSDP-compatible RS-485 readers and keypads
- Support for OSDP Biometric template transfer and Secure Channel Encryption
- Door contact supervision (open/closed) and REX push-button monitor for each door

LNL-X2220

Intelligent dual reader controller

Technical specifications

System

Controller type	Main controller
Software compatibility	OnGuard
Controller accessory	LNL-200XA, LNL-400XA, LNL-600XA
Max. no. of access levels	128
Max. no. of card formats	16
Elevator control	Yes
Elevator control max no. of floors	128
Max. no. of memory	6 MB
PCB only	Yes

Users / cards

Max no. of cardholders	240000
------------------------	--------

Interfaces

Reader interface	Clock-data, Magstripe, OSDP, OSDP V1, OSDP V2, OSDP V2 Secure Channel, RS485, SF2F, Wiegand
------------------	---

Electrical

Operating voltage	12 or 24 VDC
Current consumption	500 mA

Physical

Physical dimensions	203 x 152 x 25 mm
Net weight	255 g

Environmental

Operating temperature	0 to +70°C
Storage temperature	-55 to +85°C
Relative humidity	5% to 95% noncondensing
Environment	Indoor

Regulatory

Compliance	CE, FCC, RoHS, UL 1076, UL 294
Certification	CE, UL

