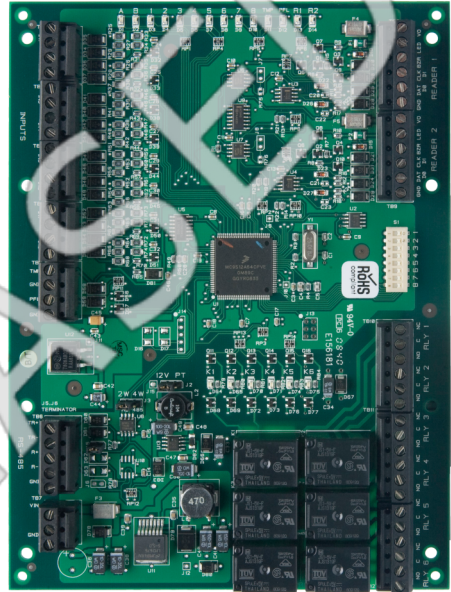


# LNL-1320

Dual Reader Interface Module



# LNL-1320

## Dual Reader Interface Module

### Technical specifications

---

#### System

Controller type	Reader module
Software compatibility	OnGuard
Max. no. of card formats	16
PCB only	Yes
LCD intrusion keypad	No

#### Readers / doors

Max. no. of doors	---
Max no. of readers	2

#### Interfaces

Reader interface	Clock-data, OSDP, Wiegand
Host connection	RS485

#### Inputs / outputs

Max no. of inputs	10
Max no. of outputs	6

#### Electrical

Operating voltage	12 or 24 VDC
Power supply type	VDC
Current consumption	125 mA

#### Physical

Physical dimensions	229 x 178 x 229 mm
Net weight	182 g
Shipping weight	300 g

#### Environmental

Operating temperature	0 to +70°C
Storage temperature	-55 to +85°C
Relative humidity	0 to 95% noncondensing

#### Regulatory

Compliance	CE, FCC, RoHS, UL 1076, UL 294
------------	--------------------------------