



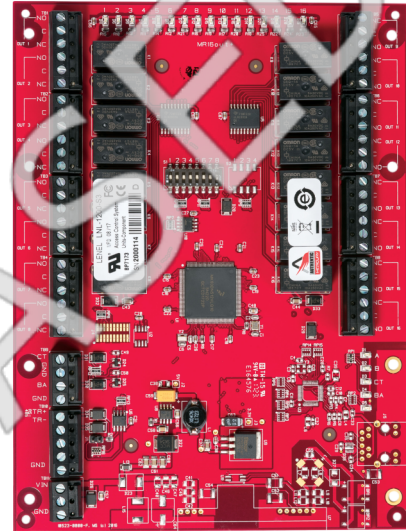
# LNL-1200-S3

## LNL-1200 output control module Series 3

### Overview

Series 3 Lenel® Output Control Module (OCM) communicates directly with the Intelligent System Controller (ISC) by either 2-wire or 4-wire RS-485 communication. Each OCM is an individually-addressed device, and counts as a single device on all Intelligent System Controllers. The OCM can be operated by either 12 or 24 VDC power. Each OCM includes dedicated tamper and power failure input contacts.

The OCM has 16 programmable output relays that can be configured for fail-safe or fail-secure operation. Each relay supports the “On,” “Off,” and “Pulse” OnGuard® software commands.



### Details

- 16 Form-C 5 A, 30 VDC contacts for load switching
- 12 or 24 VDC input power
- 2 dedicated digital inputs for tamper and power failure status
- RS-485 communication, multi-dropped (2-wire or 4-wire RS-485)
- On-board termination jumpers
- DIP switch-selectable addressing
- Status LEDs for communication to the host, heartbeat and relay status
- Elevator control, support for 128 floors
- Advanced Encryption Standard (AES) 128-bit or 256-bit encryption supported, depending on ISC and OnGuard version
- Suitable as replacement for Series 1 and Series 2 boards

# LNL-1200-S3

## LNL-1200 output control module Series 3

### Technical specifications

---

#### System

Controller type	Input / Output module
Software compatibility	OnGuard
Elevator control	Yes
Elevator control max no. of floors	128
PCB only	Yes

#### Interfaces

Host connection	RS485
-----------------	-------

#### Electrical

Operating voltage	12 to 24 VDC $\pm 10\%$ , 1100 mA maximum
	12 VDC @ 850 mA nominal, 34.82 BTUs
	24 VDC @ 450 mA nominal, 36.82 BTUs

#### Physical

Physical dimensions	152 x 203 x 25 mm
Net weight	400 g

#### Environmental

Operating temperature	0 to +70°C
Storage temperature	-55 to +85°C
Relative humidity	0 to 95% noncondensing

#### Regulatory

Compliance	CE, RoHS, UL 1076, UL 294
Standards	FCC Part 15, ULC CSA-C22.2, CAN/ULC-S319-05, cUL/ORD-C1076

#### Inputs / outputs

Inputs	2 unsupervised dedicated for cabinet tamper and UPS fault monitoring
--------	--



As a company of innovation, Kidde Global Solutions reserves the right to change product specifications without notice. For the latest product specifications, visit [firesecurityproducts.com](http://firesecurityproducts.com) online or contact your sales representative.

Last updated on 29 March 2024 - 10:36