

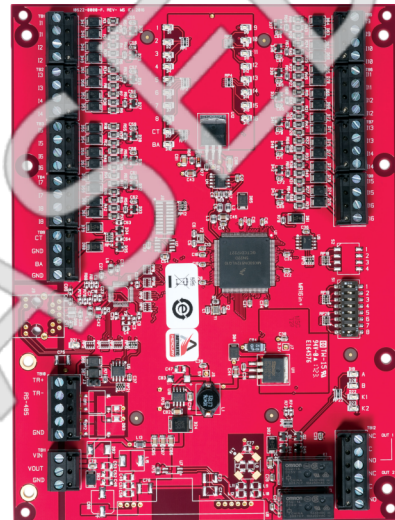
LNL-1100-S3

LNL-1100 input control module, Series 3

Overview

Series 3 Lenel® Input Control Module (ICM) provides the access control system with high-speed acknowledgement of critical alarm points in monitored areas. The ICM communicates directly with the Intelligent System Controller (ISC) by either 2-wire or 4-wire RS-485 communication. The ICM has 16 configurable input control points and 2 output control relays. It supports normally open, normally closed, supervised and non-supervised circuits.

The input circuits are scanned using an analog-to-digital converter. The digitized input status signal is software monitored and controlled, so that each input point can be programmed as a supervised or non-supervised alarm point. The output relays can also be configured for fail-safe or failsecure operation. Each really supports the “On,” “Off,” and “Pulse” Lenel OnGuard® software commands.



Details

- Grade B, A, and AA line supervision
- 12 or 24 VDC input power
- 16 programmable supervised or non-supervised contacts, standard EOL: 1K/1K ohm, 1%, 1/4 watt
- 2 Form-C 5 A, 28 VDC contacts for load switching
- 2 dedicated unsupervised inputs for (cabinet) tamper and (UPS) power failure status
- On-board termination jumpers
- DIP switch-selectable addressing
- Elevator control, support for 128 floors
- Status LED for host communication and heartbeat
- Variable resistor values for line supervision
- Downloadable firmware
- Advanced Encryption Standard (AES) 128-bit or 256-bit encryption supported, depending on ISC and OnGuard version
- Suitable as replacement for Series 1 and Series 2 boards

LNL-1100-S3

LNL-1100 input control module, Series 3

Technical specifications

System

Controller type	Input / Output module
Software compatibility	OnGuard
Elevator control	Yes
PCB only	Yes

Interfaces

Host connection	RS485
-----------------	-------

Inputs / outputs

Max no. of outputs	2 outputs, Form-C, 5 A @ 28 VDC, resistive
--------------------	--

Electrical

Operating voltage	12 to 24 VDC $\pm 10\%$, 350 mA max. 12 VDC @ 300 mA nominal, 12.27 BTUs 24 VDC @ 220 mA nominal, 18.00 BTUs
Current consumption	350 mA

Physical

Physical dimensions	152 x 203 x 25 mm
Net weight	182 g
Shipping weight	240 g

Environmental

Operating temperature	0 to +70°C
Storage temperature	-55 to +85°C
Relative humidity	0 to 95% noncondensing

Regulatory

Compliance	CE, RoHS, UL 1076, UL 294
Standards	FCC Part 15, ULC CSA-C22.2, CAN/ULC-S319005, cUL/ORD-C1076



As a company of innovation, Kidde Global Solutions reserves the right to change product specifications without notice. For the latest product specifications, visit firesecurityproducts.com online or contact your sales representative.

Last updated on 29 March 2024 - 10:36