

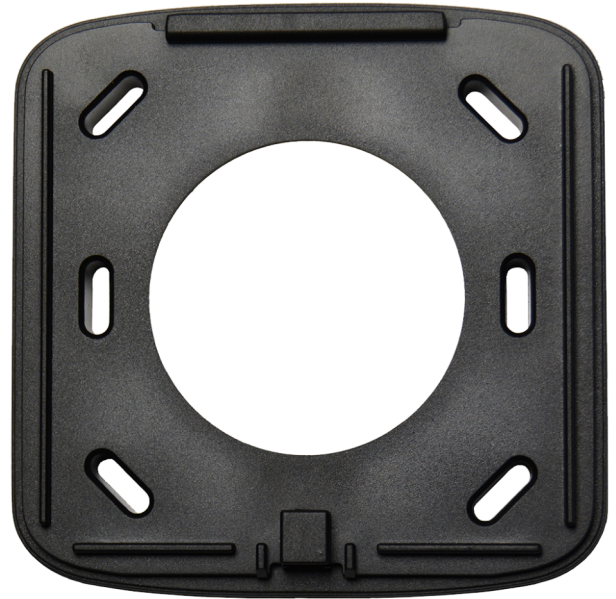


ATS118X-CVR-SQ

Installation backplate for ATS1182N, ATS1183N and ATS1184N readers, square version (86 x 86 x 10 mm)

ATS118x Installation Backplates

The ATS118x installation plate is injection moulded and has perforated holes for reader mounting. The installation plate is useful for covering socket holes when using a mullion type reader, provides more space for connections and also helps ensure reliable reading when multi-function cards are scanned. This additional space is particularly important when readers are installed upon metal surfaces.



Details

- Available in three shapes: Basic, Slim and Quattro
- Installation plates greatly reduce eddy currents from metal surfaces
- They also cover unsightly old screw holes and reader cable lead in your installation

ATS118X-CVR-SQ

Installation backplate for ATS1182N, ATS1183N and ATS1184N readers, square version (86 x 86 x 10 mm)

Technical specifications

General

Accessory group	Advisor Advanced
Type	Accessory

Physical

Physical dimensions	86 x 86 x 10 mm
Colour	Black
Material	Plastic