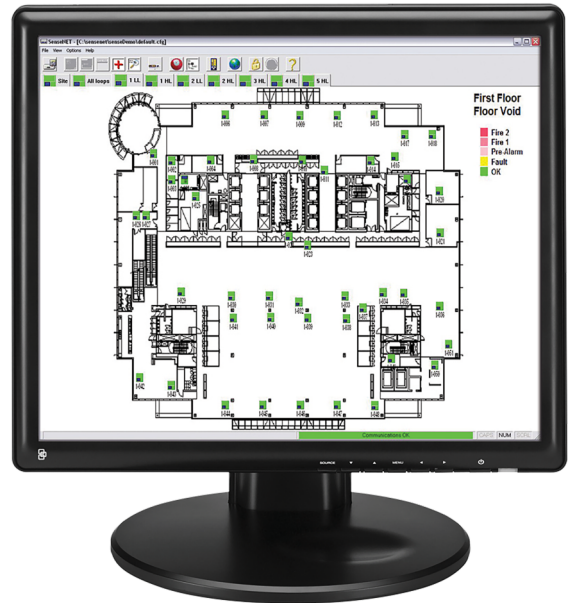


## 9-Remote

### Remote - Configuration utility for aspirating smoke detectors

#### Description

Remote is a Windows based program that provides an easy to use interface to configure the various settings of the aspirating smoke detector. It can be connected directly to a detector, or to a Command Module which will then provide access all the detectors connected via SenseNET to the Command Module. During annual maintenance Remote can be used to integrate a detector on its status and also any faults which might be present. Further diagnostics is available in the format of the detector event log viewer and chart recording viewer.



#### Details

- Configuration of detector settings
- Real-time view of detector level
- Viewing of detector event log
- Connection up to 127 detectors via a Command Module
- Viewing of historical data with histogram
- Full system diagnostics
- Enabling and disabling of detectors
- Multi-lingual support
- Offline editing with configuration file

# 9-Remote

## Remote - Configuration utility for aspirating smoke detectors

### Technical specifications

---

#### Operating system

---

Windows based

---



As a company of innovation, Kidde Global Solutions reserves the right to change product specifications without notice. For the latest product specifications, visit [firesecurityproducts.com](http://firesecurityproducts.com) online or contact your sales representative.

Last updated on 4 May 2023 - 17:07