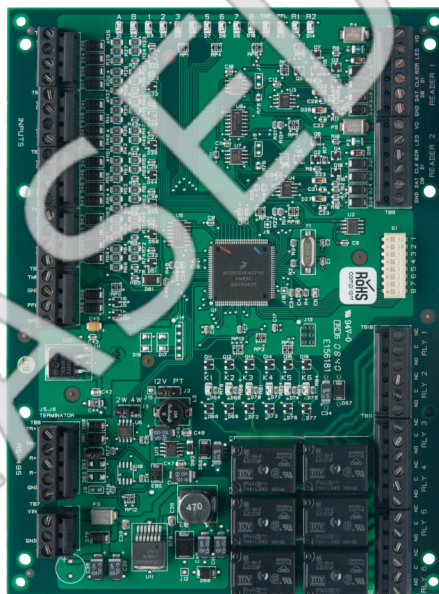


LNL-1320

Dual Reader Interface Module



LNL-1320

Dual Reader Interface Module

Technical specifications

System

Controller type	Reader module
Software compatibility	OnGuard
Max. no. of card formats	16
PCB Only	Yes
LCD intrusion keypad	No

Readers / doors

Max. no. of doors	---
Max. no. of readers	2

Interfaces

Reader interface	Clock-data, OSDP, Wiegand
Host connection	RS485

Inputs / outputs

Max. no. of inputs	10
Max. no. of outputs	6

Electrical

Operating voltage	12 or 24 VDC
Power supply type	VDC
Current consumption	125 mA

Physical

Physical dimensions	229 x 178 x 229 mm
Net weight	182 g
Shipping weight	300 g

Environmental

Operating temperature	0 to +70°C
Storage temperature	-55 to +85°C
Relative humidity	0 to 95% noncondensing

Regulatory

Compliance	CE, FCC, RoHS, UL 1076, UL 294
------------	--------------------------------



As a company of innovation, Kidde Global Solutions reserves the right to change product specifications without notice. For the latest product specifications, visit uk.firesecurityproducts.com online or contact your sales representative.

Last updated on 29 March 2024 - 10:37