



# FE130MM

## Eco Line magnetic lock 300 kgf, monitored, mortise mount

### Description

---

Eco Line mag 300 kgf, monitored. Mortise mounting.

### Application

---

Medium Security applications for internal and external doors and transom housings.

### Reliable Security

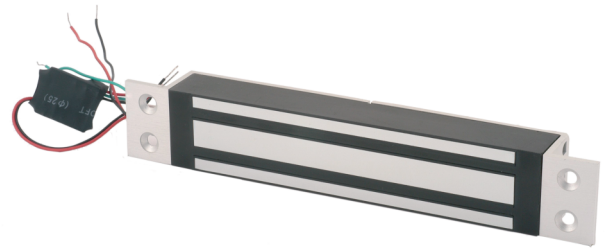
---

This state of the art electro-magnetic locking device provides positive, instantaneous door control. Filler plates, angle brackets, and other mounting adapters are available to satisfy a wide range of door and frame types and conditions.

### Safe operation

---

Our locking devices are inherently fail-safe, releasing instantly upon command or loss of power. With no moving parts to wear, stick or bind; no mechanical linkages to bend or break; and no bolt travel time or misalignment to raise concern, both unlocking and locking are always accomplished with ease and efficiency. As those electromagnetic locking devices function independently of any mechanical type locks, magnetic locks will not jeopardize the fire door rating of an opening.



### Details

---

- 300 kgf holding power
- Monitored changeover
- No residual magnetism
- 12/24 V dc jumper selectable operation
- Mounts easily with a minimum of tools

# FE130MM

## Eco Line magnetic lock 300 kgf, monitored, mortise mount

### Technical specifications

---

#### General

Product type	Magnetic lock
--------------	---------------

---

#### Holding force

Holding force kgf (Kilogram force)	300 kgf
---------------------------------------	---------

---

Holding force N (Newton)	3000
--------------------------	------

---

#### Monitoring & status

Monitored	Yes
-----------	-----

---

LED indicator	No
---------------	----

---

Door status switch	No
--------------------	----

---

Monitored changeover	Yes
----------------------	-----

---

Magnetic bond sensor	Yes
----------------------	-----

---

#### Electrical

Power supply value	12 / 24 VDC
--------------------	-------------

---

Current consumption	450 mA (+/- 2,5% @ 13,5 V)
---------------------	----------------------------

---

#### Physical

Physical dimensions	228 x 38 x 27 mm (W x H x D)
---------------------	------------------------------

---

Colour	Aluminium
--------	-----------

---

Finish	Vapour blasted aluminium
--------	--------------------------

---