

# ATS3403E

## 8 - 128 Zone integrated English security panel 3A PSU in medium enclosure including ATS1821, EN50131 Grade 3/ PD6662:2010 / BS8243

### Intrusion Alarm System

The Advisor MASTER (ATS Classic) offers a full-blown intrusion alarm system with more than 79 different input types, including support for EN50131 grade 3 Anti Mask detectors using only 1 input. A maximum of 128 zones (inputs) can be configured to operate in 8 independent alarm systems (areas). Zones may be assigned to a specific area (offices, stores, etc.) or common to multiple areas (reception, canteen). Each area may have a dedicated keypad (RAS) or can be controlled from any keypad. Areas support fullset and partset and can be controlled through PIN codes, cards or wireless keyfobs. Alarms can be reported through various communication paths like PSTN, IP, GSM or ISDN using standard protocols like SIA, XSIA or Contact-ID. The system is EN50131:2009 Grade 3 and PD6662:2010 / BS8243 compliant.

### Integrated Access Control

All ATS Classic panels control 16 doors up to 64 doors. Intrusion and access control is fully integrated allowing users to access doors while at the same time being able to control their areas. All panels also feature the exclusive "3 times badging" to arm.

### Complete Family

The ATS Classic range is a family of control panels that all share the same features, software, accessories & manuals and only differ in enclosure size, number of zones and number of areas.

### Modular RS-485 data bus

The ATS Classic panels communicate with up to 16 keypads and readers (RAS's) & 15 expanders (DGP's) using the RS485 data bus. All remote devices on the bus are continuously polled to ensure correct operation and availability. Different wiring schemes are supported to allow both new installations as well as retro-fit installations. The bus can be extended using additional modules like repeaters, splitters, optical fiber modules or RS485 to Ethernet converters.

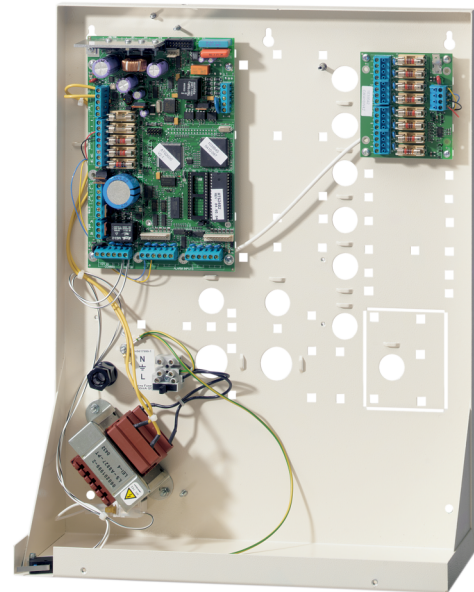
### Alarm reporting

ATS Classic panels are capable of reporting alarms and specified events using a variety of formats (SIA, XSIA, CID, voice messaging and more) via different communication paths like IP, GSM, ISDN or PSTN (built-in). The system also supports multiple paths for primary and backup reporting.

### PLC flexibility

The ATS Classic panels offer total flexibility in programming of up to 255 outputs using 24 macro logic equations. Using PLC functionality special output behavior, input behavior or access control restrictions are available.

### Remote diagnostics



### Details

- Integrated alarm & access control system for up to 128 zones, 8 areas & up to 64 doors
- Modular RS485 data bus with continuous polling of up to 16 keypads/Readers (RAS) and 15 expanders (DGP)
- PLC with 24 macro logic equations
- 255 free configurable outputs
- Built-in PSTN dialer. IP and GSM optional
- 2 or 4 state monitored analogue inputs including grade 3 anti-mask support
- Programming and servicing by PC either directly on site or from a remote location
- European software
- Switched mode power supply
- Steel enclosures
- EN50131:2009 Grade 3 compliant; Environmental Class 2

Remote diagnostics provides features to support diagnoses of vital system characteristics like power levels, input state or current consumption from the main control panel or expanders.

## **European Software**

---

The ATS Classic control panels have the same software across Europe with different country default setting and language support. This allows international customers to streamline their security equipment and promote common security procedures throughout their organization.

# ATS3403E

## 8 - 128 Zone integrated English security panel 3A PSU in medium enclosure including AT51821, EN50131 Grade 3/ PD6662:2010 / BS8243

### Technical specifications

#### System

Product type	Integrated Access Control
Panel type	Hybrid
Kit	No
No. of keypads / readers	16
Data Gathering Panels (DGP)	15
No. of alarm groups	138
Specified cable	WCAT52 WCAT54

#### Inputs

Max. no. of inputs	128
Onboard inputs	8
Inputs plug-in expansion	32
ATS1202 support	3

#### Outputs

No. of outputs	255
No. of onboard outputs	4 + 8 from AT51821

#### Area

No. of areas	8
--------------	---

#### User / cards

Max. no. of users	more than 1000
Users with name	200
Max. no. of cards	2000
Max. no. of PIN codes	2000

#### Access control

Standard doors on control panel	16
Door groups	128
Floor groups	64
Intelligent doors on 4-door DGPs	48

#### Communication

Onboard transmission type	PSTN
Transmission extension	GSM/GPRS/IP
Databus type	RS485

#### Event log

Alarm event log	1000
Access event log	1000

#### Electrical

Operating voltage	13.8 VDC supplied by the panel
Power supply type	230 VAC
Power supply value	230 VAC 50 Hz, 23 VAC 56 VA
Current consumption	250 mA
Mainboard current consumption	130 mA
Max. aux power current	1A
Glass break fuses	7

#### Physical

Physical dimensions	475 x 370 x 160 mm
Net weight	8.6 kg
Shipping weight	9.7 kg
Colour	Beige
Material	Metal
Housing	Large metal

#### Environmental

Vandal proof	No
Operating temperature	0 to 50°C
Relative humidity	95% noncondensing
Environment	Indoor
IP rating	IP30

#### Regulatory

EN50131 Grade	Grade 3
Compliance	CE
Certification	Certalarm
Standards	EN50131 Grade 3

#### Note

Some indicated numbers may include possible expansions required