

NS4702-24P-4X

Enterprise-class 24-port PoE+ Gigabit Switch with 10G uplink and touchscreen

Overview

This enterprise-class network switch is engineered to meet a variety of high-performance applications such as PoE distribution, optical network architectures, and high-density performance through reliable technology and advance Layer 2+ networking features.

It is ideally suited to large scale IP CCTV based security systems.

Touch Screen Interface

The touchscreen interface allows for basic configuration and diagnostics without the need for a local computer. Basics set-up such as IP configuration, port assignment and PoE control can all be configured from the touchscreen interface.

The touchscreen also supports basic diagnostics such as monitoring of ports, PoE power as well as diagnostic functions such as local ICMP Ping and PD Alive Check management.

Powerful PoE+ Support

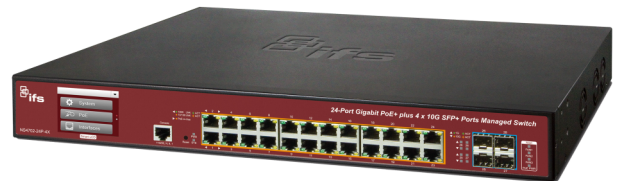
The NS4702-24P-4X features IEEE 802.3at Power over Ethernet (PoE+) and up to 400 Watts of PoE budget providing optimized deployment and power management of PoE edge devices such as IP Surveillance cameras, access control panels and wireless access points.

Static Routing

The NS4702-24P-4X supports static routing tables allowing for complex system architectures. Traffic can be routed across different domains or between different VPN. This allows flexible network design and greater control of network traffic, essential for modern IP CCTV systems.

Flexible 10Gbps Ethernet Trunking Solution

10G Ethernet is a big leap in the evolution of Ethernet. Each of the SFP+ slot in the NS4702-24P-4X supports Dual-Speed, 10GBase-SR/LR or 1000Base-SX/LX. The administrator now can flexibly choose the suitable SFP/SFP+ transceiver according to the transmission distance or the transmission speed required to extend the network efficiently.



Details

- Built in Touch Screen for configuration and monitoring
- 24-ports Gigabit Ethernet RJ-45 with PoE+
- 4 SFP/SFP+ slots for 10G Uplinks - compatible with S3x and S4x Series SFPs
- PD Alive Checking
- Support for Static Routing
- Up to 128Gbps non-blocking switch fabric
- 32 Megabits shared data buffer
- 16K MAC address table
- Full Multicast Support for IP Video - up to 255 multicast groups
- VLAN Support - up to 256 VLANs groups
- Power over Ethernet
- Complies with IEEE 802.3at Standard for PoE
- Up to 400 Watts PoE Power Budget
- Up to 13 PoE+ devices simultaneously
- Advanced Security
- MAC Filtering and Source IP/MAC address port-binding
- Quality of Service (QoS)

NS4702-24P-4X

Enterprise-class 24-port PoE+ Gigabit Switch with 10G uplink and touchscreen

Technical specifications

General

Storm control	Broadcast, Multicast, Unicast
Security	802.1x, ACL, RADIUS, Source MAC / IP address binding, TACACS+
DHCP snooping	Yes
Fault relay output	No

Category

Category	Enterprise
Management	Managed (L3 Static Routing)
Managed	Yes (Layer 3)
PoE	Yes

Physical ports

No. of ports	24
Port type	Gig
Speed	10G
PoE / PoE+	24 port PoE/14 port PoE+
Fiber port	4
Supported SFPs	S30/S35 series, S40 series

Switch performance

Switch fabric	128 Gbps
Throughput (Mpps)	95.23
Mac table	16 K
Jumbo frame support	10 K

Layer 2 Functions

Management interface	Console, Web, Telnet, SNMP 1,2,3, SSH/SSL secure access
IGMP snooping	255 Group, Snooping v1, v2, v3
IGMP query	Yes
VLAN, QoS	255, yes
Access control list	256 entries

Electrical

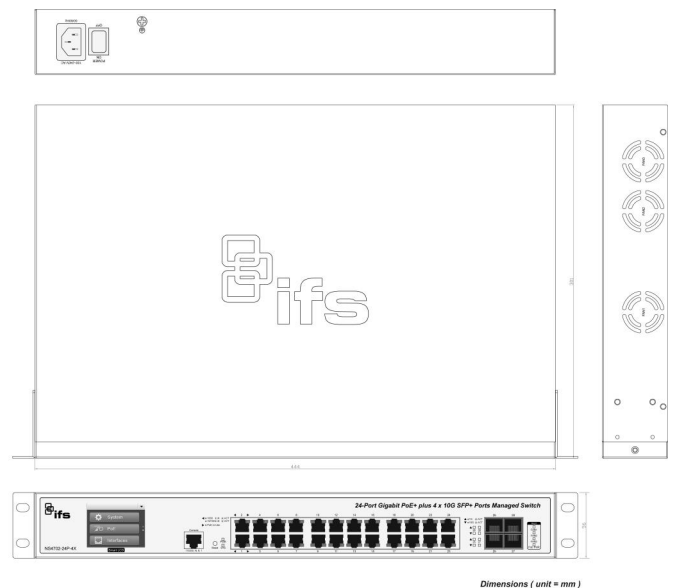
PoE power budget	400 W
Redundant power	No
Power supply type	100 to 240 VAC
Power consumption	488 W

Physical

Physical dimensions	440 x 300 x 56 mm (1.25 U high)
Net weight	4635 g
Colour	Black
Mounting type	19" rack
Stackable	No

Environmental

Operating temperature	0 to +50°C
Storage temperature	-20 to +70°C
Relative humidity	0 to 95% (non-condensing)
Environment	Indoor



As a company of innovation, Carrier Fire & Security reserves the right to change product specifications without notice. For the latest product specifications, visit firesecurityproducts.com online or contact your sales representative.

Last updated on 5 May 2023 - 10:26