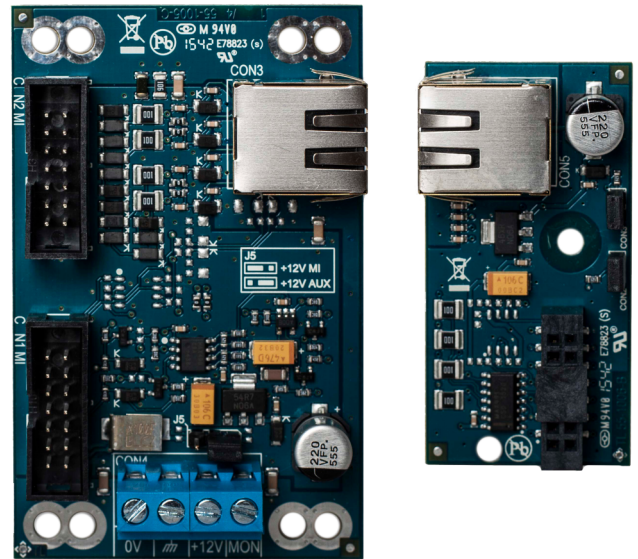


ATS7072

Remote ATS1238 expander kit + housing

Remote ATS1238 expander kit

The ATS7072 offers the possibility to install the ATS1238 outside the housing of the panel.



Details

- Remote installation solution for ATS1238
- Up to 100 m distance
- RJ45 connection between master and slave pcb
- ATS7070 master PCB to be connected to panel MI bus
- ATS7071 slave PCB to be connected to ATS1238 MI connection
- Can be installed into TX-9000-03-1 empty housing
- Kit contains: Master PCB - ATS7070, slave PCB - ATS7071, housing for ATS1238 - TX-9000-03-1, cable - MI-bus flat cable

ATS7072

Remote ATS1238 expander kit + housing

Technical specifications

General

Expander type	Wireless expander
Product line	Advisor Advanced
Connection type	Plug-in, RJ45
Compatibility	ATSx000A FW v26.026.0141 and higher, ATSx500A MR3 FW MR3.0.37437, ATSx500A MR4 FW MR4.0.37542 and higher, ATS1238 FW v2.2 and higher
Max. distance from panel	100 m
Max. per panel	1
Specified cable	WCAT54

Electrical

Operating voltage	9.5 to 14.0 VDC
Power consumption	40 mA at 13.8 V (ATS7070) 40 mA at 13.8 V (ATS7071)

Physical

Physical dimensions	50 x 80 mm (ATS7070) 30 x 59 mm (ATS7071)
---------------------	--

Environmental

Operating temperature	0 to +50°C
Relative humidity	95% noncondensing
Environment	EN50130-5 ; Class II - Indoor (general)
IP rating	IP30

Regulatory

Certification	EN50131 Grade 2
---------------	-----------------



As a company of innovation, Carrier Fire & Security reserves the right to change product specifications without notice. For the latest product specifications, visit firesecurityproducts.com online or contact your sales representative.

Last updated on 20 November 2023 - 9:53