

# ATS1201E

**8 to 32 zones DGP input expander, 3 A power supply, medium metal housing, EN Grade 3 Class II**

## Product overview

---

The ATS1201E expanders offer 8 standard inputs, 8 Open Collectors (OC) outputs and a siren driver. The expander can be extended to a total of 32 inputs and 32 outputs. It has a built-in 3 A switched mode power supply.

## Expanders

---

Expanders are used to expand the number of alarm inputs in an Axon or Advisor Advanced system. Expanders allow inputs and outputs/relays to be connected at a location remote from an Axon or Advisor Advanced panel. Expanders communicate via poll & reply messages. Detectors, door contacts and other detection devices are connected to expanders that report any change of state to the control panel for processing. Available expanders include support for conventional devices, wireless devices as well as intelligent addressable devices. A special expander is available providing expansion of four to eight intelligent doors or lifts.

## System databus connection

---

The system databus is used to connect expanders as well as keypads and readers (RASs) to the Axon or Advisor Advanced control panels. Remote devices can be up to 1.5 km from a control panels when using the preferred wiring and cable types. Keypads, readers and expanders have to be connected via a 2 pair twisted and shielded data cable to the system databus connection to achieve this. (WCAT52 is recommended). Daisy chain is the preferred wiring method. The shield of the data cable should be connected to earth at the control panel and should be left disconnected at any other end.

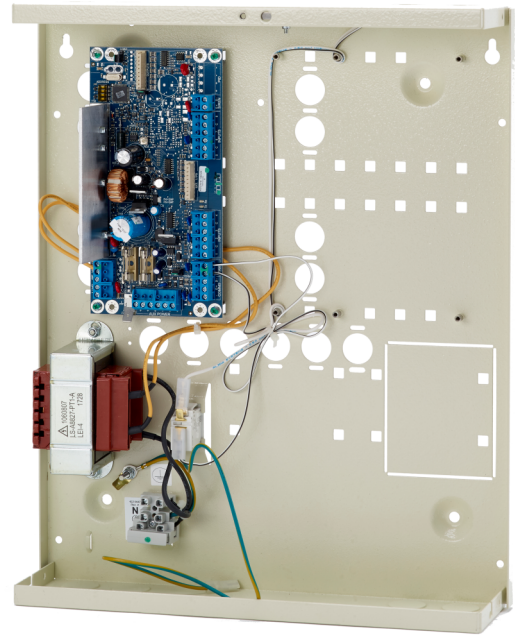
## Functionality

---

Expanders provide information from remote locations to Axon or Advisor Advanced control panels in structured records. Data collected ranges from a wired input state to wireless or addressable device dates to a door state.

Bus devices communicate with the control panel. If a failure in communication occurs, the expander remembers the last alarm in a system preventing loss of an alarm due to a short interruption in data communication.

Up to 30 expanders can be connected to an Axon or Advisor Advanced, depending on the variant.



## Details

---

- 8 inputs on board
- Expandable to 32 inputs
- 8 Open Collector outputs on board
- Compatible with Axon and Advisor Advanced panels
- Expandable to 32 OC outputs/relays with optional cards
- 1 siren output
- Switched mode power supply

# ATS1201E

8 to 32 zones DGP input expander, 3 A power supply, medium metal housing, EN Grade 3 Class II

## Technical specifications

---

### General

Expander type	Input expander
Product line	Advisor Advanced, ATS Master, Axon
Connection type	Databus connection
Compatibility	Axon, Advisor Advanced and Advisor Master
Max. distance from panel	1.5 km
Max. per panel	7 / 15 / 30 (depending on panel type)
Specified cable	WCAT52 / WCAT54 or equivalent

### System

Addressing	DIP Switches
End-of-line resistor	Selectable

### Inputs

Total	32
Onboard	8
Expandable	24 (3x ATS1202)

### Outputs

Total	32
Onboard	8
Expandable	24
Type uitgangen	Open Collector
Relays	Via ATS1810 / ATS1811
Maximum number of outputs	32
Siren outputs	1

### Backup

Battery type	Up to 18Ah
Dynamic battery testing	Yes

### Electrical

Power supply type	230 VAC
Power supply value	230 VAC +10%, -15%, 50/60 Hz
Power consumption	2.9 A max. at 13.8 VDC
Current consumption	75 mA typical
Integrated power supply	Yes

### Physical

Physical dimensions	315 x 388 x 85 mm
Net weight	5.4 kg
Material	Steel (painted)
Housing	Medium Metal

### Environmental

Operating temperature	-10 to +55°C
Relative humidity	95% noncondensing
Environment	EN50130-5 ; Class II - Indoor (general)
IP rating	IP30

### Regulatory

Compliancy	CE
Certification	CE



As a company of innovation, Kidde Global Solutions reserves the right to change product specifications without notice. For the latest product specifications, visit [firesecurityproducts.com](http://firesecurityproducts.com) online or contact your sales representative.

Last updated on 18 October 2024 - 13:47