

# NS2052-8P-2C

## 8-port PoE Unmanaged Industrial Ethernet Switch with 2 x RJ45/SFP Gigabit uplink combo ports

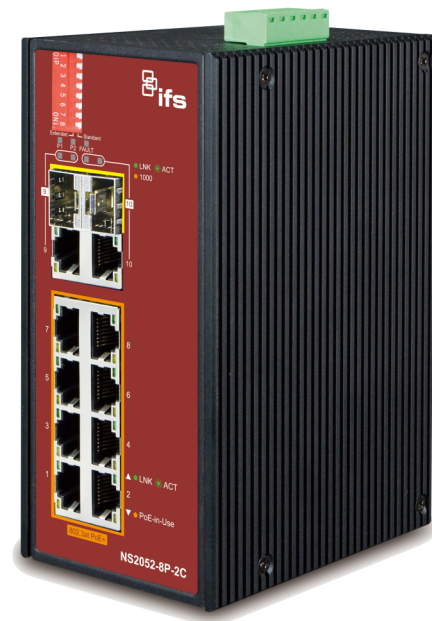
### Overview

The IFS 8-port PoE Unmanaged Industrial Ethernet Switch provides four 10/100Mbps Ethernet ports with IEEE802.3-at PoE and one 10/100Mbps non-PoE Ethernet port.

This unmanaged switch provides plug-and-play installation with no programming required and is ideal for use in small IP systems. The switch uses an IP-30 standard metal case and can also be used in electrically harsh and climatically demanding environments. The switch accommodates either DIN-rail or wall mounting for efficient installation in multiple applications.

This switch is engineered with a high-performance switch architecture capable of providing a non-blocking switch fabric and wire-speed throughput of 5.6Gbps. With its 2K MAC address table, this switch offers wire-speed packet transfer performance without the risk of packet loss. The Flow Control function allows the switch to deliver fast and reliable IP data transfer.

This switch is ideal for applications such as IP cameras, access control, VoIP and wireless access points.



### Einzelheiten

- 8 RJ-45 Ports 10/100Base-TX (PoE)
- 2 RJ-45/SFP combo Ports 100/1000 (non-PoE)
- Auto MDI/MDI-X
- High Performance Architecture
- Unmanaged plug and play installation requiring no programming
- Store-and-Forward switching architecture with wire-speed filtering and forwarding rates
- Power over Ethernet (PoE)
- Up to 4 IEEE 802.3at devices powered
- Supports up to 30 watts for each PoE port
- Auto detect powered device (PD)
- Robust Hardened Design
- Provides either DIN-rail or wall-mounting
- 52 to 56VDC Operation
- Redundant power with reverse-polarity protection
- Removable terminal block for master and slave power
- Alarm relay output for power-failure alert
- Voltage/surge-suppression
- Complies with IEC60068-2-xx standards for free-fall, shock and vibration
- Wide operating temperature range of -40°C to 75°C

# NS2052-8P-2C

## 8-port PoE Unmanaged Industrial Ethernet Switch with 2 x RJ45/SFP Gigabit uplink combo ports

### Technische Spezifikationen

#### Kategorie

Kategorie	Industriell
Verwaltung	Unverwalteter
PoE	Ja

#### Physische Anschlüsse

Anzahl der Ports	8
Porttyp	Schnell
Geschwindigkeit	Schnell
PoE / PoE+	8 port PoE+
Glasfaser-Port	2 SFP
Unterstützte SFPs	S30/S35 Serie

#### Switch Leistung

Switch Struktur	5.6Gbps
Durchsatz (Mpps)	4.1
Jumbo Frame	10 K
Unterstützung	

#### Layer 2 Funktionen

Verwaltungsschnittstelle	Unmanaged plug and play installation requires no programming
--------------------------	--------------------------------------------------------------

#### Elektrische Angaben

PoE-Leistungsbudget	30 W (per port)
Redundante Leistung	Ja
Netzteil	52 bis 56 VDC
Energieverbrauch	244 W (Max.)

#### Physikalisch

Abmessungen	72 x 107 x 161 mm
Nettogewicht	1034 g
Farbe	Schwarz
Material	Metall
Montage	DIN-Hutschiene, Wandmontage

#### Umweltbedingungen

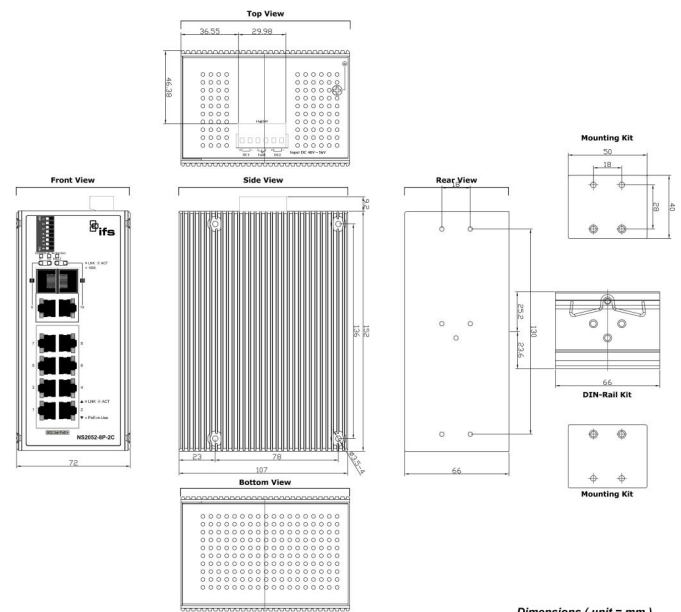
Betriebstemperatur	-40 to +75
Lagertemperatur	-40 to 75 °C
Relative Luftfeuchtigkeit	0 to 95% (non-condensing)
Umgebung	Draußen
IP Klassifizierung	IP30

#### Regulativ

IEC-Standard	IEC60068-2-27 (Schlag), IEC60068-2-32 (freier Fall), IEC60068-2-6 (Erschütterung)
--------------	-----------------------------------------------------------------------------------

#### LED Indicators

Power:	Power input 1 - Green; Power input 2 - Green
Power Fault:	Green: Normal operation - Off; Fault - Red
PoE Ports (Port-1~Port-8):	Green: LNK/ACT (10/100Mbps), Orange: PoE-In-Use
Uplink Port (Port-9~Port-10) SFP:	Green: LNK/ACT, Orange: 1000
Uplink Port (Port-9~Port-10) RJ45:	Green: LNK/ACT, Orange: 1000



Dimensions (unit = mm)



Als innovatives Unternehmen behält sich Carrier Fire & Security das Recht vor, Produktspezifikationen ohne Ankündigungen zu ändern. Für die aktuellsten Produktspezifikationen, besuchen Sie bitte [de.firesecurityproducts.com](http://de.firesecurityproducts.com) online oder kontaktieren Sie bitte unsere Vertriebsmitarbeiter.