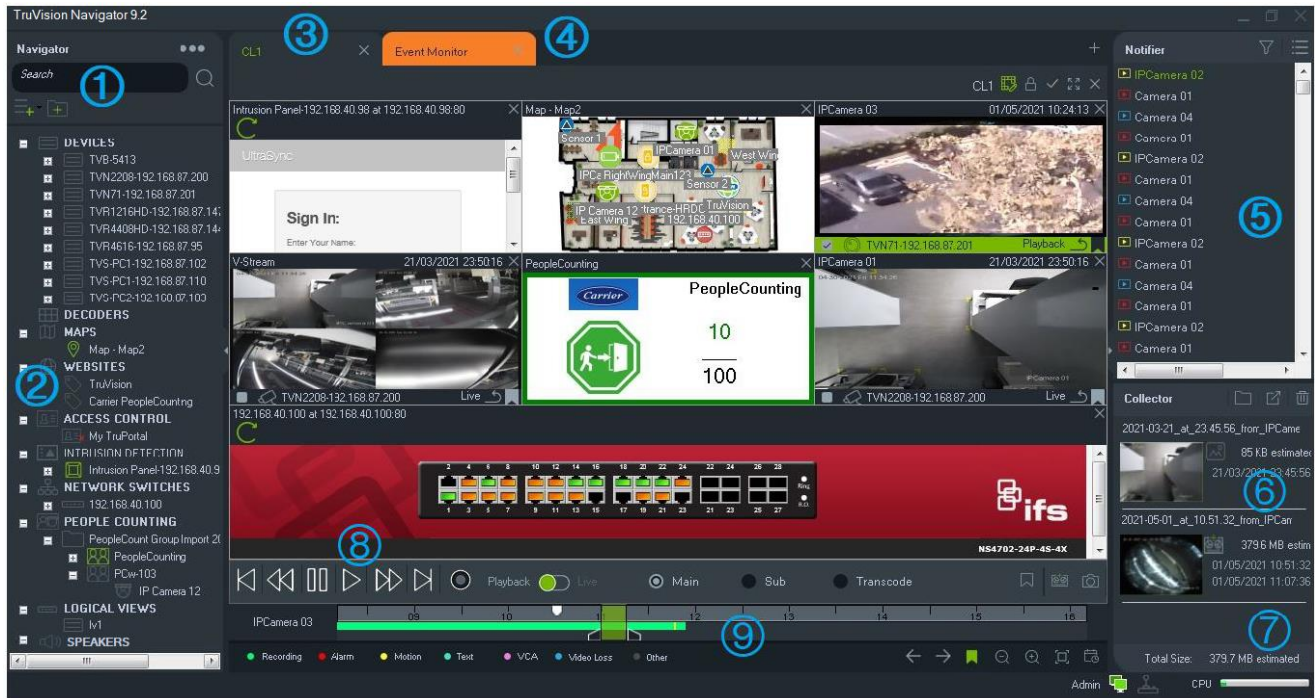


TruVision Navigator 9.2 Quick Start Guide

This document provides basic instructions for installing TruVision® Navigator and adding a single recorder or camera to enable viewing of video.



- 1 **Navigator toolbar.** Contains the Navigator main menu drop-down list (includes **Settings, Device Manager, Bookmark Manager, Tasks, Recurring Tasks, Open Exported Video File, Check for Updates, User Settings, Group and Users, Audit History, Event-Actions, Help, and Logout**), the **Search** field, and the **Add Device** and **Add Folder** buttons.
- 2 **Navigator panel.** Contains recorders, cameras, decoders, maps, websites, access control points, intrusion detection, network switches, people counting, and logical views that can be organized within folders.
- 3 **Viewer panel.** Up to 10 tabbed viewing panels can be added by clicking the **+** button. Click the **Custom View** button to select and create different video tile layouts up to 10x10.
- 4 **Event Monitor.** A detachable viewing window to view live video from cameras linked to the Notifier.
- 5 **Notifier panel.** View real time events coming from TruVision devices. Contains links to the video event notifications as well as the **Event Center** button that launches the Event Center window. Also contains a **Filters** menu to filter event types shown in the Notifier.
- 6 **Collector panel.** Contains all relevant video segments, snapshots, and local recordings available for export. Also contains the **Show files in folder, Export All, and Delete All** buttons.
- 7 **System indicators.** Contains the CPU usage meter as well as server and keypad connectivity status. Hover over the meter to see the current CPU usage percentage.
- 8 **Playback controls.** Control video playback and recording.
- 9 **Timeline.** Provides a graphical view of recorded video over a period of time. Contains **Live/Playback** and **Main/Sub** stream toggle controls, **Zoom In/Out, Center TimeLine, Add Bookmark to Video, Jump to the previous bookmark, Jump to the next bookmark, Bookmarks show/hide on Timeline, Go To Date, Save Video, Snapshot, PTZ Controls, and Push to Talk** buttons. Color coded video tags are displayed in the bottom left corner of the Navigator screen.

Installation options

There are two installation options for TruVision Navigator. The core features and functions remain the same regardless of which of the two installation options are selected:

- **Standalone Mode** – This installation option allows the client and database to reside on the same computer. No other clients on the network can connect to the database on this computer. This installation option is ideal for small, standalone systems.
- **Multi-Client Mode (traditional client/server)** – This installation option permits the client and server to reside on the same or separate computers. This installation option is ideal for larger systems with many geographically dispersed users, computers, and recording devices.

Note: You must install the Multi-Client mode to display people counting on a web page.

Installation prerequisites

For each computer:

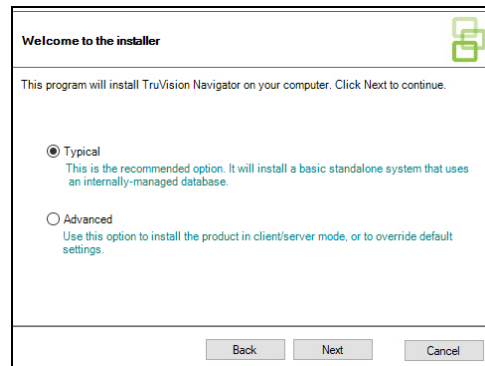
- Download the latest version of TruVision Navigator from firesecurityproducts.com (search for TruVision Navigator).
- Download the latest operating system service pack from the Microsoft® Download Center.
- Check for Windows® updates at update.microsoft.com.
- Download the latest video driver.
- For the minimum software and hardware requirements, see the *TruVision Navigator User Manual*.

Installation (standalone or client/server)

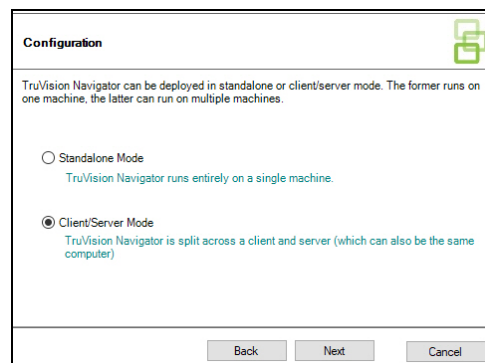
Note: Administrator rights are required to install Navigator on a computer, but the application is available to any user that successfully logs in to a Windows account on that computer.

To install TruVision Navigator on a computer:

1. Double-click the TruVision Navigator Setup.exe installer to begin the installation. If prompted, right-click on the Setup.exe file and select **Run as Administrator**.
2. If necessary, click **Yes** in the User Account Control window to make changes to the computer.
3. The End User License Agreement window appears. Select the **I Accept these terms and conditions** check box and then click **Next** to continue.
4. The Welcome window appears. Select **Typical** (standalone installation) or **Advanced** (for a client/server installation or to change the default installation location), and then click **Next**.



5. *Advanced installation only:* The Installation Folder window appears. Click the **Next** button to accept the default installation folder or click ... to select a different location.
6. *Advanced installation only:* The Configuration window appears. Select **Standalone Mode** or **Client/Server Mode**.



7. Follow all instructions in the subsequent windows until the installation is complete.
8. Click **Finish** and then click **Close** to complete the installation. A TruVision Navigator icon appears on the computer desktop and in the **Start** menu.

Note: See the *TruVision Navigator User Manual* for detailed installation instructions.

Logging in for the first time

1. After successful installation, launch TruVision Navigator using one of the following methods:
 - Double-click the TruVision Navigator icon on the desktop.
 - Go to **Start > All Programs > TruVision Navigator**.
2. When TruVision Navigator launches, a login window appears. Log in as the default administrator by typing in the following default credentials:
 - **User Name** – admin
 - **Password** – admin
3. Click **Login**. After initial login, the Change Password window displays and prompts to change the default password for security purposes.

- Type the new password in the **Password** field.
- Re-type the password in the **Confirm Password** field.
- Select a question from the **Challenge Question** drop-down list.
- Type the answer to the challenge question in the **Challenge Answer** field.
- Click **OK**.

Adding a single device

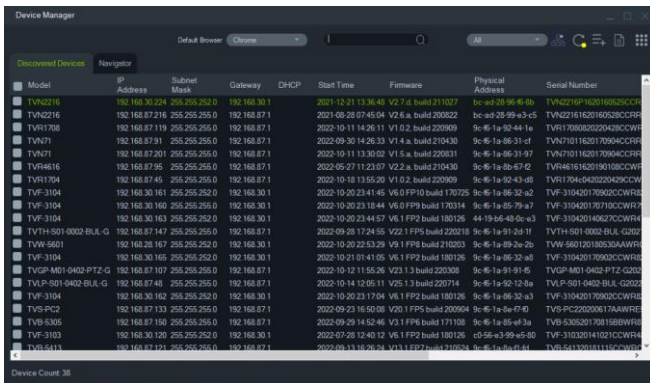
After successful login, add a single device to the Navigator panel by doing the following:

Click the **Add Device** button  and then select **Add Manually** or **Add via Discovery Tool**.

IMPORTANT: A wired network connection is required for device discovery. Do not use a Wi-Fi network connection when following these steps.

Add via Discovery Tool

- Using the mouse, select one or more devices from the discovered devices list and then click **Add**.



- Type the **Username** and **Password**.
- Click **OK**. The device appears under the Devices node in the Navigator panel.

Add manually

- Select the appropriate model from the **Device Type** drop-down list.

Add Device

Device Type: Recorder

Hostname/IP Address:

Port: 8000

HTTP Port: 80 Use SSL

Username:

Password:

Add cameras connected to this device.

OK Cancel

Note: Select **TruVision Recorder** or **TruVision Camera** from the drop-down list for any TruVision device. Using one of these drivers enables the device's browser-based configuration page.

- Type a name in the **Device Title** field. Values are alphanumeric.
- Based on the device type, a selection from the **Streaming Type** drop-down list may be required. For some devices, there is only one option for the **Streaming Type**, so it is selected by default.
- Type the device's IP address or the EzDDNS URL (e.g., http://hostname.tvr-ddns.net) in the **Device Address** field.
- The **Port** field is pre-populated with a default value based on the type of device selected. If the port assigned to the device is different from the default value, type the correct port value in this field.
- Type the **Username** and **Password**.
- Click **OK**. The device appears under the Devices node in the Navigator panel.

Note: After clicking **OK**, fields highlighted with a red exclamation point indicate rejected values. Hover over the exclamation points for tips on why the values were invalid. All fields must be valid to successfully add a device.

Viewing video from an added camera

- Expand the icon for the added device to view cameras.
- Double-click on a camera icon or drag a camera icon from the Navigator panel to a video tile in the Viewer panel to display video.

Updates

Click the Navigator main menu button and select **Check for Updates**. This downloads the latest language pack and standalone player from the cloud. Language pack requires a restart. Click **Restart Navigator** to restart the application and apply updates.

Check for Firmware updates

Use the Firmware Updates window to upgrade the firmware of the devices. Right-click the Devices icon in the Device tree and select **Check for Firmware Updates** to check the TruVision Cloud server for any updated firmware of the devices added to TruVision Navigator.

Help

Click the Navigator main menu button and select **Help**. Click **Launch Help** to open the *TruVision Navigator User Manual*, where more detailed instructions are available on all topics.

Copyright

© 2023 Carrier. All rights reserved. Information is subject to change without prior notice.

This document may not be copied in whole or in part or otherwise reproduced without prior written consent from Carrier, except where specifically permitted under US and international copyright law.

Trademarks and patents

TruVision and associated names and logos are a product brand of Aritech, a part of Carrier.

Other trade names used in this document may be trademarks or registered trademarks of the manufacturers or vendors of the respective products

Contact information

EMEA: <https://firesecurityproducts.com>

Australian/New Zealand: <https://firesecurityproducts.com.au/>

Product documentation

Please scan the QR code to download the electronic version of the product documentation. The manuals are available in several languages.

