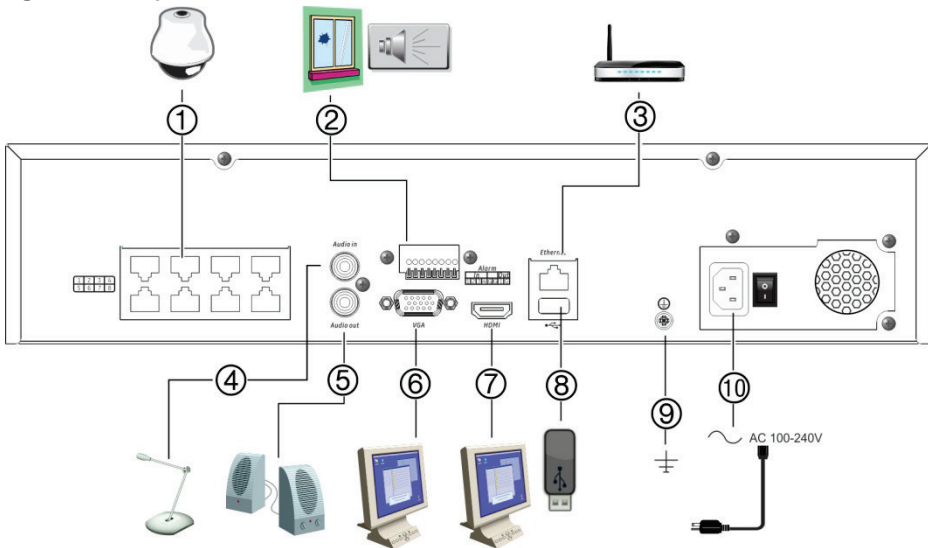


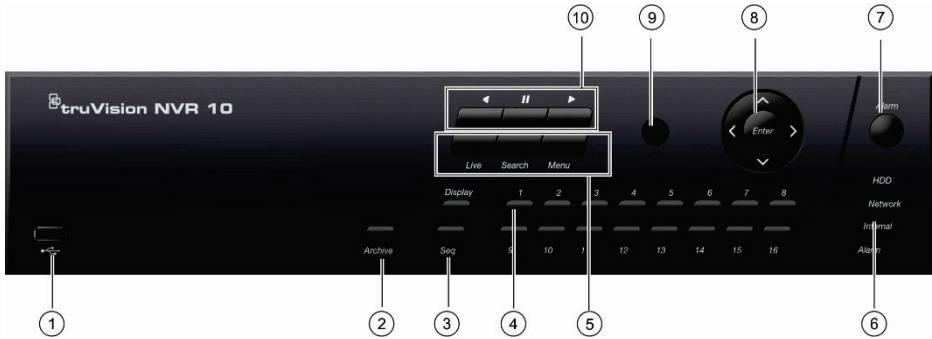
# TruVision NVR 10 Quick Start Guide

Figure 1: Back panel connections



1. Embedded ports to connect up to eight IP cameras (depending on model).
2. Connect up to four alarm inputs and one alarm relay output.
3. Connect to a network.
4. Connect an RCA connector for audio input
5. Connect to speakers for audio output.
6. Connect to a VGA monitor.
7. Connect to an HDTV. The HDMI connection supports both digital audio and video.
8. Universal Serial Bus (USB) 3.0 port. Connect to an additional device such as a USB mouse, CD/DVD burner, or USB HDD.
9. Connect to ground.
10. Connect to a power cord.

Figure 2: Front panel controls (16-channel model shown)



1. **USB 2.0 port.**
2. **Archive button:** Press once to enter quick archive mode. Press twice to start archiving.
3. **Display and Seq buttons:** In *live view mode*, press **Display** to toggle through the single and multiviews. Press **Seq** to start/stop sequencing in live view mode.
4. **Channel buttons.** Switch between different cameras in live view, PTZ control or playback modes.
5. **Live, Menu and Search buttons:** Press **Live** to switch to live view mode. Press **Menu** to enter or exit the main menu. In live mode, press **Search** to enter the advanced search menu.
6. **Status LEDs.** Indicates the status of the HDD, network, and Watchdog, as well as whether there is an external alarm.
7. **Alarm button:** Press to manually acknowledge an alarm.
8. **Enter and arrow buttons:** Use the Direction buttons to navigate in the menus and to control playback. Press **Enter** to confirm menu selection.
9. **IR receiver.**
10. **Playback buttons:** **Reverse:** In live view mode, use to play back the oldest available video. In playback mode, play back a camera in the reverse direction. **Pause:** In live view, freeze the last image for all active cameras. In playback mode, stop playback. **Play:** In live view mode, play 24-hour playback of the selected camera. In playback mode, play back the camera in the forward direction.

Figure 3: Quick access toolbar



1. **Pause:** Freeze live image of the selected camera.
2. **Start Manual recording:** Start/stop manual recording.
3. **Instant Playback:** Play back the recorded video from the last five minutes.
4. **Audio On:** Enable/disable audio output.
5. **Snapshot:** Capture a snapshot of a video image.
6. **PTZ Control:** Enter PTZ control mode.
7. **Digital Zoom:** Enter digital zoom mode.
8. **Image Settings:** Modify the image lighting levels.
9. **Show Text:** Display inserted text on screen.
10. **Auxiliary Focus:** Automatically focus the camera lens
11. **Lens Initialization:** Initialize the lens of a camera with a motorized lens
12. **Close:** Close the toolbar.

## Package contents

The TruVision NVR 10 (model TVN 10) is shipped with the following items:

- IR (infrared) remote control
- Two AAA batteries for the remote control
- AC power cords (US, Europe, UK)
- USB mouse
- Brackets
- Recorder
- *TruVision NVR 10 Quick Start Guide*

You can download the software and the following manuals from our web site:

- *TruVision NVR 10 User Manual*
- *TruVision Recorder Operator Guide*

## Installation environment

Refer to the user manual for detailed information, but observe these important requirements:

- Place the unit in a secure location.
- Ensure that the unit is in a well-ventilated area.
- Do not expose the unit to rain or moisture.

## Quick install

Recommended steps for setting up the recorder:

1. Connect all the devices required to the back panel of the recorder. See Figure 1 on page 1.

### Basic connections:

Connect monitor A to the VGA or HDMI output. Connect the mouse to the USB port in the front panel.

### Optional connections:

All the other connections shown are optional and depend upon installation requirements.

2. Connect the power supply to the unit and turn on the power.
3. Set up the unit with the required settings using the setup Wizard.

## First-time use

The recorder has an express installation wizard that lets you easily configure basic recorder settings when first used. It configures all cameras simultaneously. The configuration can then be customized as required.

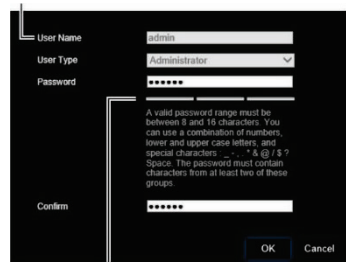
By default, the setup wizard will start once the recorder has loaded. The wizard walks you through some of the more important settings of your recorder.

When you first start up the unit, the Activation window appears. You must define a high-security admin password before you can access the unit. There is no default password provided.

Tips on creating a strong password:

- A valid password range must be between 8 and 16 characters. You can use a combination of numbers, lower and upper case letters, and special characters : \_ - , . \* & @ / \$ ? Space. The password must contain characters from at least two of these groups.
- The password is case-sensitive so use a mixture of upper and lower case letters.
- Do not use personal information or common words as a password.

User Name: It is always "admin". It cannot be changed.



The bar showing password strength

The wizard will then guide you through the menus to set the time and date, network configuration, HDD management, and recording configuration.

When all the required changes have been entered, click **Finish** to exit the wizard. The

recorder is now ready to use. Recording starts automatically.

## Operating the recorder

There are several ways to control the unit:

- Front panel control
- IR remote control
- Mouse control
- Web browser control (TruVision Navigator, TVRMobile)

### Front panel

The buttons on the front panel control most functions. See Figure 2 on page 2 for the locations of the controls.

### IR remote control

The IR remote control buttons are similar to those on the front panel. Place the two AAA batteries in the remote control.

The remote control is only included for US.

For EMEA: You can purchase a remote control by ordering part number TVR-REMOTE-1.

### To connect the remote control to the recorder:

1. Press **Menu** on the front panel or right-click the mouse and select **Menu**. The main menu screen appears.
2. Select **Display Mode Settings > Monitor**.
3. Check the recorder's device address value. The default value is 255. The device address is valid for all IR controls.
4. On the remote control press the **Device** button.
5. Enter the device address value. It must be the same as that on the recorder.
6. Press **OK** on the remote control.

### USB mouse

The USB mouse provided with the recorder operates all the functions of the recorder, unlike the front panel, which has limited functionality. The mouse lets you navigate and

make changes to settings in the user interface.

Connect the mouse to the recorder by plugging the mouse USB connector into the USB port on the back or front panel. The mouse is immediately operational and the pointer should appear.

### Web browser control

The recorder's Web browser lets you view, record, and play back videos as well as manage all aspects of the recorder from any PC with Internet access. The browser's easy-to-use controls give you quick access to all recorder functions.

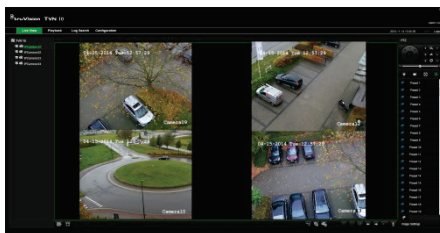
To access the unit, open a web browser and enter the IP address assigned to the recorder as a web address. In the logon screen, enter the user ID and password.

The default values for recorder network settings are:

- DHCP: Disabled by default.
- IP address - 192.168.1.82
- Subnet mask - 255.255.255.0
- Gateway address - 192.168.1.1
- Server Port: 8000
- HTTP Port: 80
- RTSP port: 554

**Note:** The following ports need to be forwarded in the router in order to connect properly: Server port and RTSP port.

Figure 4: Web browser interface



## Live view mode

Live mode is the normal operating mode of the unit where you watch live pictures from the cameras.

Regularly used functions in live view can be quickly accessed by clicking the left-button of the mouse when its cursor is on the camera image. The shortcut pop-up toolbar appears. See Figure 3 on page 2 for a description of the functions available.

## Configuring the recorder

The recorder has an icon-driven menu structure that allows you to configure the unit's parameters. Each command icon displays a screen that lets you edit a group of settings. Most menus are available only to system administrators.

Refer to the recorder user manual for detailed information on configuring the unit.

### To access the main menu from live view:

- Press the **Menu** button on the remote control or front panel.  
- Or -
- Right-click the mouse and select **Menu** from the pop-up menu.

The main menu screen appears. Move the mouse over a command icon in the menu toolbar and click to select it.



### Description of the command icons in the menu toolbar:



Configures display settings.



Configures analog and IP camera settings.



Configures standard network settings.



Configures recording settings.



Configures alarm and event settings.



Configures system settings.



Configures storage management.



Configures user settings.



View system information.



Provides reference information to the various toolbars and menus within the interface.



Provides access to logout, reboot and shutdown options.

## Specifications

Power supply	100 to 240 VAC, 6.3 A, 50 to 60 Hz
Power consumption (without HDD)	<= 45 W
Operating temperature	-10 to +55 °C (50 to 131 °F)
Relative humidity	10 to 90%
Dimensions (W x D x H)	<b>TVN:</b> (with front panel) 362 × 332 × 79 mm (14.25 × 13.07 × 3.11 in.) <b>TVNc:</b> (with front panel) 315 × 236.5 × 47.5 mm (12.4 × 9.3 × 3.11 in.)
Weight	≤ 8 kg (≤ 17.6 lb.) (without HDD)

## Legal and regulatory information

### Copyright

© 2018 United Technologies Corporation. All rights reserved.

Interlogix is part of UTC Climate, Controls & Security, a unit of United Technologies Corporation. All rights reserved

### Trademarks and patents

Trade names used in this document may be trademarks or registered trademarks of the manufacturers or vendors of the respective products.

### Contact information and manuals/ tools/ firmware

For contact information and to download the latest manuals, tools, and firmware, go to the web site of your region.

Americas: [www.interlogix.com](http://www.interlogix.com)

EMEA: [www.firesecurityproducts.com](http://www.firesecurityproducts.com)

Manuals are available in several languages.

Australia/New Zealand: [www.utcs.com.au](http://www.utcs.com.au)

### EU directives

#### 2012/19/EU (WEEE directive):



#### Equipment Disposal

Products marked with this symbol cannot be disposed of as unsorted municipal waste in the European Union. For proper recycling, return this product to your local supplier upon the purchase of equivalent new equipment, or dispose of it at designated collection points. For more information see: [www.recyclethis.info](http://www.recyclethis.info).

#### 2013/56/EU & 2006/66/EC (battery directive):



#### Battery Disposal

This product contains a battery that cannot be disposed of as unsorted municipal waste in the European Union. See the product documentation for specific battery information. The battery is marked with this symbol, which may include lettering to indicate cadmium (Cd), lead (Pb), or mercury (Hg). For proper recycling return the battery to your supplier or to a designated collection point. For more information see: [www.recyclethis.info](http://www.recyclethis.info).

