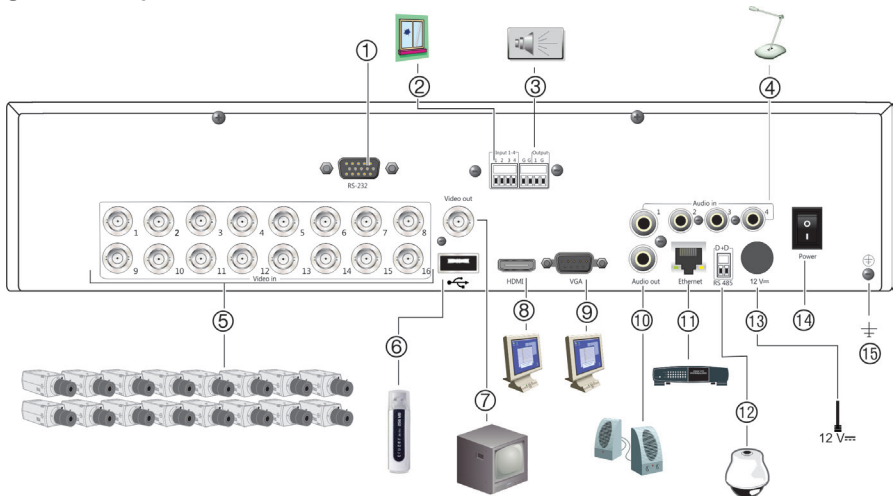


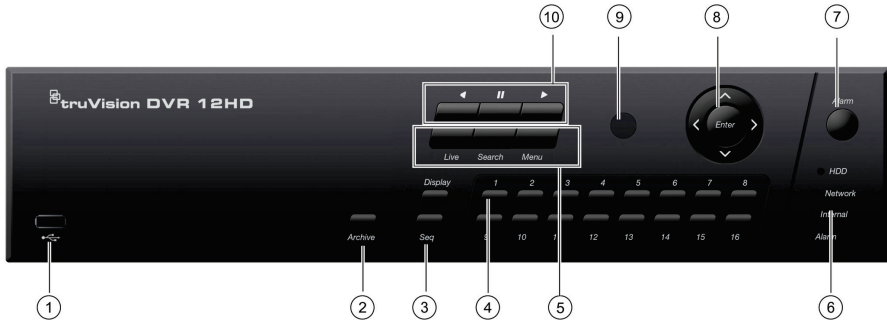
TruVision DVR 12HD Quick Start Guide

Figure 1: Back panel connections



1. Connect to a RS-232 device.
2. Connect up to four alarm inputs.
3. Connect one alarm output.
4. Connect four audio inputs to RCA connectors.
5. Connect up to 16 analog cameras to BNC-type connectors (depends on the recorder model).
6. Connect to an optional USB device such as a mouse, CD/DVD burner or HDD.
7. Connect one CCTV monitor (BNC-type connector).
8. Connect to a HDTV. The HDMI connection supports both digital audio and video.
9. Connect to a VGA monitor.
10. Connect to speakers for audio output.
11. Connect to a network.
12. Connect to a RS-485 device such as a PTZ camera or a keypad.
13. Connect to the 12 VDC PSU (included).
14. Power switch (on/off).
15. Connect to ground.

Figure 2: Front panel controls (16-channel model shown)



1. **USB 2.0 port.**
2. **Archive button:** Press once to enter quick archive mode. Press twice to start archiving.
3. **Display and Seq buttons:** In *live view mode*, press **Display** to toggle through the single and multiviews. Press **Seq** to start/stop sequencing in live view mode.
4. **Channel buttons.** Switch between different cameras in live view, PTZ control or playback modes.
5. **Live, Menu and Search buttons:** Press **Live** to switch to live view mode. Press **Menu** to enter or exit the main menu. In live mode, press **Search** to enter the advanced search menu.
6. **Status LEDs.** Indicates the status of the HDD, network, and Watchdog, as well as whether there is an external alarm.
7. **Alarm button:** Press to manually acknowledge an alarm.
8. **Enter and arrow buttons:** Use the Direction buttons to navigate in the menus and to control playback. Press **Enter** to confirm menu selection.
9. IR receiver.
10. **Playback buttons:** **Reverse:** In live view mode, use to play back the oldest available video. In playback mode, play back a camera in the reverse direction. **Pause:** In live view; freeze the last image for all active cameras. In playback mode, stop playback. **Play:** In live view mode, play 24-hour playback of the selected camera. In playback mode, play back the camera in the forward direction.

Figure 3: Quick access toolbar



1. **Pause:** Freeze live image of the selected camera.
2. **Start Manual recording:** Start/stop manual recording.
3. **Instant Playback:** Play back the recorded video from the last five minutes.
4. **Audio On:** Enable/disable audio output.
5. **Snapshot:** Capture a snapshot of a video image.
6. **PTZ Control:** Enter PTZ control mode.
7. **Digital Zoom:** Enter digital zoom mode.
8. **Image Settings:** Modify the image lighting levels.
9. **Show Text:** Display inserted text on screen.
10. **Auxiliary Focus:** Automatically focus the camera lens
11. **Lens Initialization:** Initialize the lens of a camera with a motorized lens
12. **Close:** Close the toolbar.

Package contents

The TruVision DVR 12HD (model TVR 12HD) is shipped with the following items:

- IR (infrared) remote control
- Two AAA batteries for the remote control
- AC power cords
- 12 VDC PSU
- USB mouse
- DVR
- CD with software and manuals
- *TruVision DVR 12HD Quick Start Guide*
- *TruVision DVR 12HD User Manual (on CD)*
- *TruVision Recorder Operator Guide (on CD)*

Installation environment

Refer to the user manual for detailed information, but observe these important requirements:

- Place the unit in a secure location.
- Ensure that the unit is in a well-ventilated area.
- Do not expose the unit to rain or moisture.

Quick install

Recommended steps for setting up the recorder:

1. Connect all the devices required to the back panel of the recorder. See Figure 1 on page 1.

Basic connections:

Connect the cameras to the BNC camera inputs and monitor A to the BNC, VGA or HDMI output. Connect the mouse to the USB port in the front panel.

Optional connections:

All the other connections shown are optional and depend upon installation requirements.

2. Connect the power supply to the unit and turn on the power.
3. Set up the unit with the required settings using the setup Wizard.

First-time use

The recorder has an express installation wizard that lets you easily configure basic recorder settings when first used. It configures all cameras simultaneously. The configuration can then be customized as required.

By default, the setup wizard will start once the recorder has loaded. The wizard walks you through some of the more important settings of your recorder. Select the preferred language for the system and then enter the administrator password. The default admin password is 1234. It is strongly recommended that this password is changed.

The wizard will then guide you through the menus to set the time and date, network configuration, HDD management, and recording configuration.

When all the required changes have been entered, click **Finish** to exit the wizard. The recorder is now ready to use. Recording starts automatically.



Important: Your TruVision unit is delivered with default user name and password credentials for initial access, easy configuration and auto discovery. For security reasons, it is highly recommended to change the default credentials.

Operating the recorder

There are several ways to control the unit:

- Front panel control
- IR remote control
- Mouse control
- Web browser control (TruVision Navigator, TVRmobile)
- KTD-405 keypad control
- TVK-800 keypad (from TVK-800 firmware version 1.0i)

Front panel

The buttons on the front panel control most functions. See Figure 2 on page 2 for the locations of the controls.

IR remote control

The IR remote control buttons are similar to those on the front panel. Place the two AAA batteries in the remote control.

To connect the remote control to the recorder:

1. Press **Menu** on the front panel or right-click the mouse and select **Menu**. The main menu screen appears.
2. Select **Display Mode Settings > Monitor**.
3. Check the recorder's device address value. The default value is 255. The device address is valid for all IR controls.
4. On the remote control press the **Device** button.
5. Enter the device address value. It must be the same as that on the recorder.
6. Press **OK** on the remote control.

USB mouse

The USB mouse provided with the recorder operates all the functions of the recorder, unlike the front panel, which has limited functionality. The mouse lets you navigate and make changes to settings in the user interface.

Connect the mouse to the recorder by plugging the mouse USB connector into the USB port on the back or front panel. The mouse is immediately operational and the pointer should appear.

Web browser control

The recorder's Web browser lets you view, record, and play back videos as well as manage all aspects of the recorder from any PC with Internet access. The browser's easy-to-use controls give you quick access to all recorder functions.

To access the unit, open a web browser and enter the IP address assigned to the recorder as a web address. In the logon screen, enter the default user ID and password:

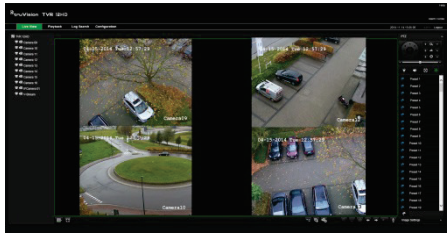
- User ID: admin
- Password: 1234

The default values for recorder network settings are:

- DHCP: Disabled by default.
- IP address - 192.168.1.82
- Subnet mask - 255.255.255.0
- Gateway address - 192.168.1.1
- Server Port: 8000
- HTTP Port: 80
- RTSP port: 554

Note: The following ports need to be forwarded in the router in order to connect properly: Server port and RTSP port.

Figure 4: Web browser interface



Live view mode

Live mode is the normal operating mode of the unit where you watch live pictures from the cameras.

Regularly used functions in live view can be quickly accessed by clicking the left-button of the mouse when its cursor is on the camera image. The shortcut pop-up toolbar appears. See Figure 3 on page 2 for a description of the functions available.

Configuring the recorder

The recorder has an icon-driven menu structure that allows you to configure the unit's parameters. Each command icon displays a screen that lets you edit a group of settings. Most menus are available only to system administrators.

Refer to the recorder user manual for detailed information on configuring the unit.

To access the main menu from live view:

- Press the **Menu** button on the remote control or front panel.
- Or -
- Right-click the mouse and select **Menu** from the pop-up menu.

The main menu screen appears. Move the mouse over a command icon in the menu toolbar and click to select it.



Description of the command icons in the menu toolbar:



Configures display settings.



Configures analog and IP camera settings.



Configures standard network settings.



Configures recording settings.



Configures alarm and event settings.



Configures system settings.



Configures storage management.



Configures user settings.



View system information.



Provides reference information to the various toolbars and menus within the interface.



Provides access to logout, reboot and shutdown options.

Camera setup

See Table 1 on page 6 for the maximum analog/IP camera configuration by recorder model.

Specifications

Power supply: 12 VDC

Power consumption (without HDD):

TVR 1204	≤ 15 W
TVR 1208	≤ 20 W
TVR 1216	≤ 20 W

Operating temperature: -10 to +55 °C (14 to 131 °F)

Relative humidity: 10 to 90%

Dimensions (W x H x D):

TVR 1204HD /	315 × 242 × 45 mm
TVR 1208HD	(12.4 × 9.5 × 1.8 in.)
TVR 1216HD	380 × 290 × 48 mm
	(15.0 × 11.4 × 1.9 in.)

Weight:

TVR 1204HD /	≤ 1.5 kg (3.3 lb.)
TVR 1208HD:	
TVR 1216HD:	≤ 2 kg (4.4 lb.)

Contact information

For contact information, go to
www.interlogix.com, or
www.utcssecurityproducts.eu

Table 1: Maximum analog/IP camera configuration by recorder model

Mix of analog and IP cameras					
Up to 16 channels		Up to 8 channels		Up to 4 channels	
Analog	IP	Analog	IP	Analog	IP
16	0	8	0	4	0
15	1	7	1	3	1
14	2	6	2	2	2
13	3	5	3		
12	4	4	4		
11	5				
10	6				
9	7				
8	8				

