

# TruVision Device Manager 9.4 SP2

## Management software for all TruVision devices

### Overview

The TruVision Device Manager is a convenient utility software for use with TruVision IP cameras and recorders. The tool can also discover TruPortal access control panels, IFS network switches and UltraSync (ZeroWire) panels on the LAN network.

### Easy & convenient!

The software provides an easy method of searching active online IP devices within a subnet without knowing the device's IP address. Once the device is found on the network by the software, a user can easily configure the network setting parameters.

TruVision Device Manager also supports the activation of new TruVision devices and has an embedded storage calculator for calculating the estimated storage capacity based on camera parameters.

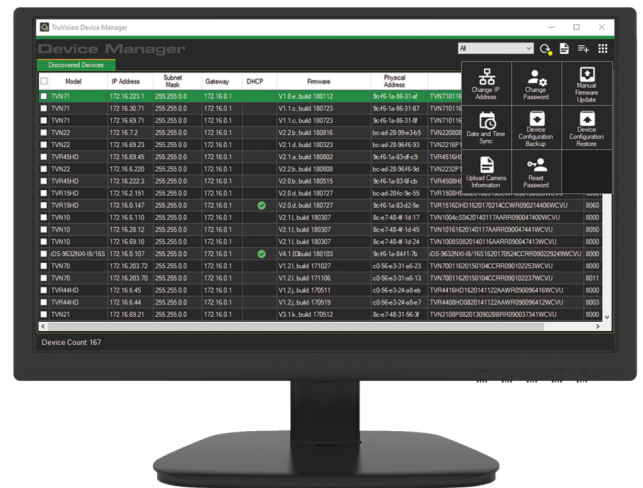
The backup/restore function allows the user to keep a backup of device configuration or restore the configuration when needed.

The software supports the change of the administrator password of the devices.

Time and date can be synced via the software among all the TruVision devices and TruPortal panels on the LAN network.

The firmware of TruVision devices can be updated in one or more devices via the bulk update feature.

The supported features may differ depending on the device type, model and firmware! See the user manual for more information.



### Détails

- Device discovery for TruVision devices, TruPortal panels, IFS network switches and UltraSync (ZeroWire) panels
- Set network parameters for TruVision devices, TruPortal panels and IFS network switches
- Change administrator password of TruVision devices
- Manual firmware upgrade for TruVision devices
- Date/time sync for TruVision devices and TruPortal panels
- Backup/restore configuration for TruVision devices

# TruVision Device Manager 9.4 SP2

## Management software for all TruVision devices

### Spécifications techniques

---

#### Général

|                         |   |
|-------------------------|---|
| Matériel pris en charge | IFS network switches, TruPortal, TruVision DVRs, TruVision IP cameras, TruVision NVRs |
| Type de logiciel        | Logiciel de configuration   |
| Segmentation            | Commercial  |
| Technologie supportée   | Vidéo   |

#### Détails du logiciel

|                                   |          |
|-----------------------------------|----------|
| Architecture logicielle           | Autonome |
| Langue de l'interface utilisateur | English  |

#### Configuration requise

|                                       |   |
|---------------------------------------|---|
| Système d'exploitation pris en charge | Windows 10, Windows 11, Windows 7, Windows 8, Windows 8.x |
|---------------------------------------|---|

#### Features

|                              |  |
|------------------------------|--|
| Activate devices             | Activate new TruVision devices   |
| Storage calculator           | Calculate estimated storage capacity for TruVision recorders   |
| Device Discovery             | Device discovery on LAN for TruVision devices, TruPortal panels, IFS network switches and UltraSync (ZeroWire) intrusion panels. |
| Change IP address of devices | Change password in one or more devices   |
| Change password of devices   | Change password in one or more devices   |
| Manual firmware update       | Update firmware in one or more devices   |
| Date and time sync           | Synchronize date and time for all TruVision devices  |
| Backup/restore configuration | Backup/restore the device configuration  |
| Upload camera information    | Based on XLS file  |
| Reset password               | Reset password of a device based on reset code/file received from UTC Technical Support  |



En tant que société d'innovation, Kidde Global Solutions se réserve le droit de modifier les spécifications des produits sans préavis. Pour les dernières spécifications du produit, visitez le site web [be.firesecurityproducts.com](http://be.firesecurityproducts.com) ou contactez votre représentant commercial.

Last updated on 13 January 2026 - 15:58