



ATS2007

8 - 64 zone integrated security panel / Denmark

Intruder Alarm System

The Advisor MASTER is a full-blown intruder alarm system with more than 79 different input types. A maximum of 64 zones (inputs) can be programmed to operate over 4 independent alarm systems (areas). Zones may be assigned to a specific area (offices, stores, etc.) or common to all (reception, canteen, etc.). Each area may have its separate RAS.

Integrated Access Control

All the ATS panels can control 16 doors and allow users to disarm alarm areas as access is granted. All panels also feature the exclusive "3 times badging" to arm.

Complete Family

The Advisor MASTER is a family of 4 control panels that all share the same software, accessories & manuals and only differ by the database & enclosure sizes.

Modular RS-485 data bus

The Advisor MASTER communicates with up to 16 RAS's & 15 DGP's using the RS485 data bus. All remote devices on the bus are continuously polled to ensure correct operation and can be connected in star or loop configuration using the optional ATS1740 or ATS1742 interfaces.

Alarm reporting

The ATS panels are capable of reporting alarms and specified events using a variety of formats (SIA, XSIA, CID, 200 Bd FSK or voice messaging) via either the build-in PSTN dialer or via the optional ISDN-B channel adapter. The ISDN-D is available in the BENELUX for X-25 D-channel reporting via ISDN. In conjunction with the ATS1801 and ATS1806 a TCP/IP reporting connection can be established for the Interlogix network receiver. Up to 4 central stations with 2 phone numbers per CS give 8 possible reporting connections.

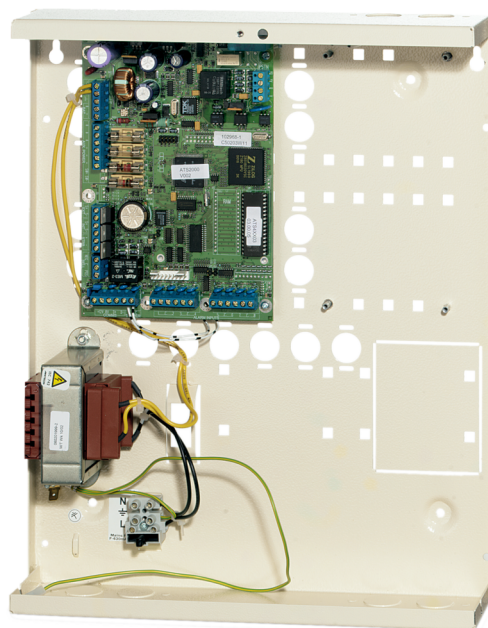
PLC flexibility

The Advisor MASTER offers a total of flexibility in programming up to 255 outputs through 24 macro logic equations.

Analogue Inputs

All the inputs of the ATS panels are analogue inputs, which enables the measurement of input loops resistance (in Ohms or Voltages) for diagnostic purposes. The inputs can be 2 or 4 state monitored with EOL resistors of 2k2, 4k7 or 10k Ohms. All the control panels can measure the voltage and current supplied to all the devices on the RS485 data bus and report back to the operator using TITAN Diagnostic.

European Software



Details

- Integrated alarm & access control system for up to 64 zones, 4 areas & 16 doors
- Modular RS485 data bus with continuous polling of up to 16 RAS and 15 DGP
- PLC with 24 macro logic equations
- 255 freely programmable outputs
- Built-in PSTN dialer
- 2 or 4 state monitored analogue inputs
- Programming and servicing by PC either directly on site or from a remote location
- European software
- Switched mode power supply
- Steel enclosures
- DD243-2004 compliant

The ATS control panels have the same software across Europe with different country default setting. This allows international customers to streamline their security equipment and promote common security procedures throughout their European operations.

ATS2007

8 - 64 zone integrated security panel / Denmark

Technical specifications

System

Product line	ATS Master
Data Gathering Panels (DGP)	15
Specified cable	WCAT 52/54 or equivalent

Inputs

Max. no. of inputs	64
Onboard inputs	8
ATS1202 support	3

Outputs

No. of outputs	255 (max. number of OC outputs on unit)
No. of onboard outputs	12
On board	Int. & ext. siren strobe + prog. relay

Area

No. of areas	4
--------------	---

User / cards

Users with name	50-200 (with ATS 1830 RAM memory expansion)
-----------------	---

Access control

Standard doors on control panel	16
Door groups	10-128 (with ATS 1830 RAM memory expansion)
Floor groups	10-64 (with ATS 1830 RAM memory expansion)
Intelligent doors on 4-door DGPs	48
Alarm groups	74-138*
Remote Arming Stations	16

Communication

Onboard transmission type	PSTN
Transmission extension	GSM/GPRS/IP

Event log

Alarm event log	250-1000 (with ATS 1830 RAM memory expansion)
Access event log	10-1000 (with ATS 1830 RAM memory expansion)

Electrical

Operating voltage	230 V 50 Hz/23 VAC 56 VA
Power supply value	13.8 VDC / 2 A

Physical

Physical dimensions	315 x 388 x 85 mm (W x H x D) 130 x 200 mm (W x H) (PCB dimensions)
---------------------	--

Environmental

Operating temperature	0 to +50°C
-----------------------	------------

User / cards

Users (cardholders)	50-11466*
4 to 10 digit pin codes	50-1000*